

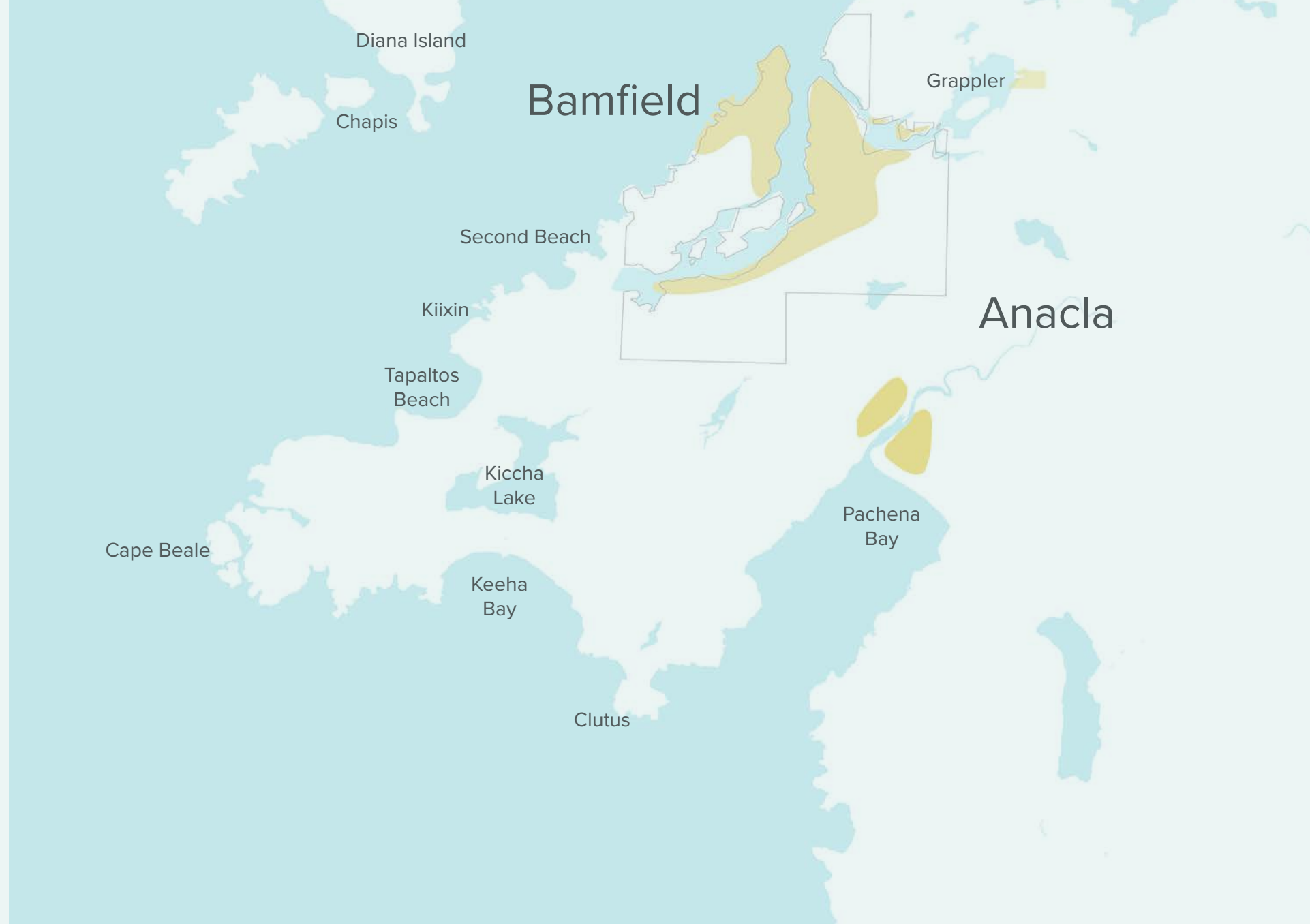
# 08 Emerging Ideas



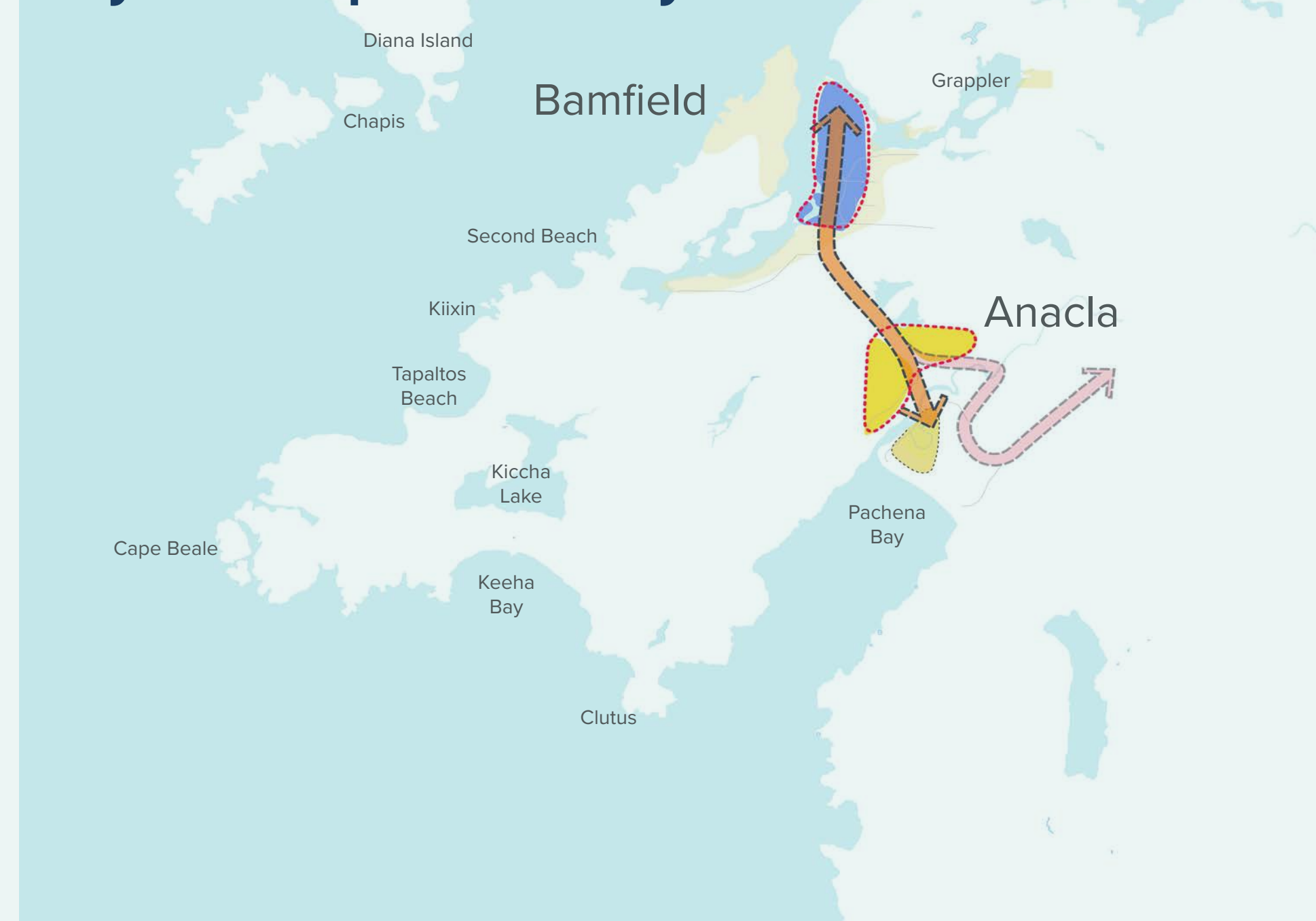
**HUU-AY-AHT FIRST NATIONS  
FRAMEWORK PLAN**

The Framework Plan is shaped by 5 structuring ideas that physically organize land uses, mobility, and open spaces.

## 01 Learn from and build off of existing communities



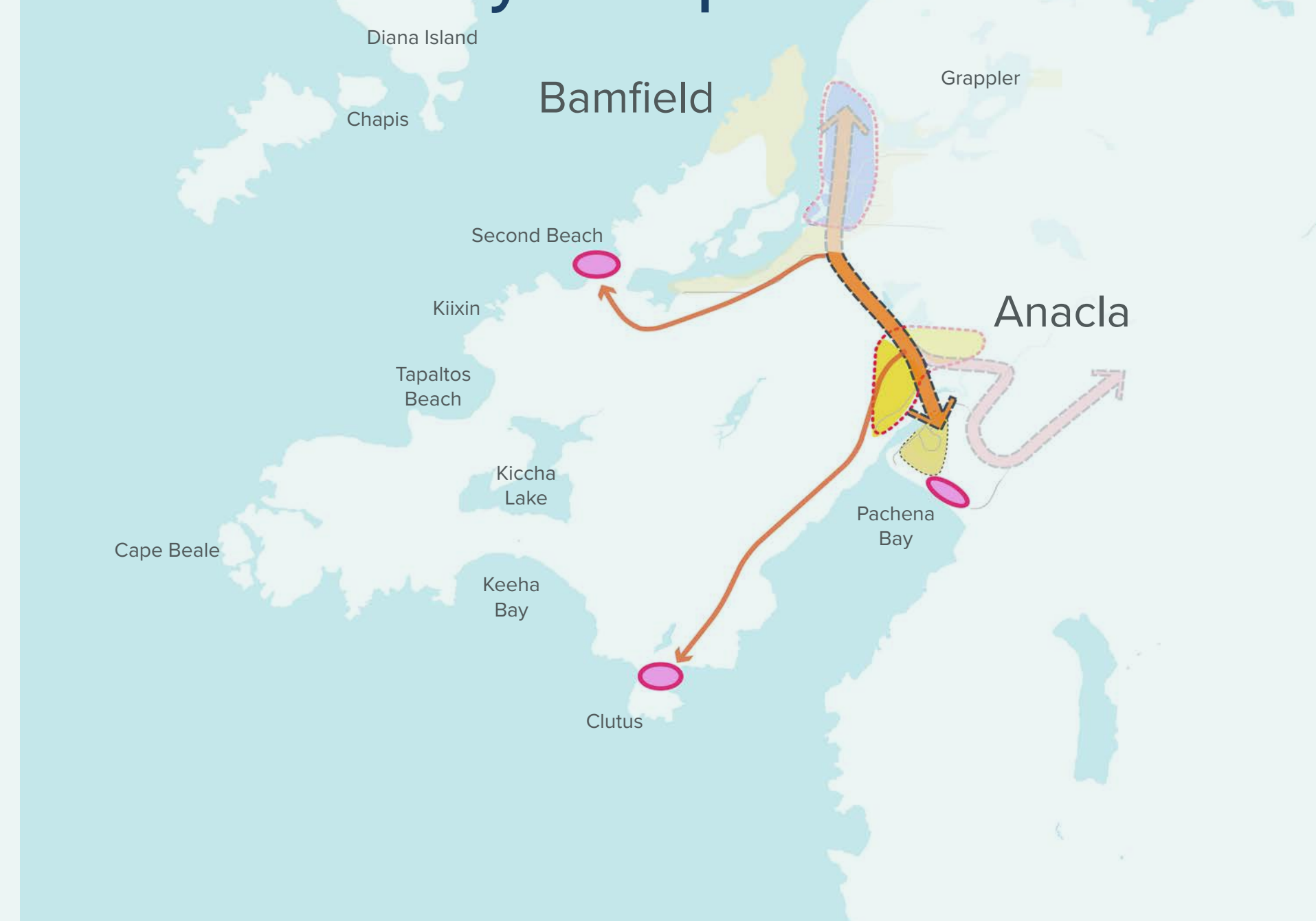
## 02 Expand Anacla and Bamfield as distinct yet complementary communities



## 03 Three distinct and easily accessible tourism landmarks



## 04 Create an interconnected coastline with an array of experiences



## 05 Introduce secondary points of interest along the Bamfield Main Road



## Tell us what you think!

What do you think about the Mission Statement and Principles on panel 7 and the overarching ideas above?



Project Website

[huuayaht.org/huu-ay-aht-framework-plan](http://huuayaht.org/huu-ay-aht-framework-plan)



Facebook

Huu-ay-aht Framework Plan



ANCIENT SPIRIT, MODERN MIND

Forum

URBAN  
STRATEGIES  
INC.



# Idea 1



**HUU-AY-AHT FIRST NATIONS  
FRAMEWORK PLAN**



Existing Anacla and Bamfield

## The Plan will enhance and build off of existing communities

Anacla and Bamfield are two distinct yet related communities. The plan will enhance the character of each, and build off investments made to date.

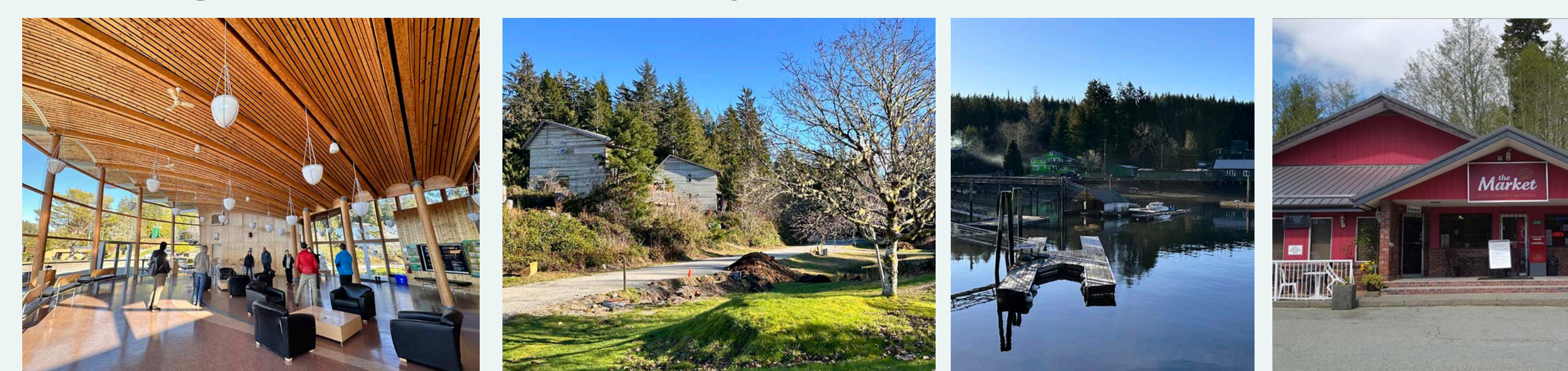
### Existing Upper Anacla Community



### Existing Lower Anacla Community



### Existing Bamfield Community



## Tell us what you think!

In your own words, describe the character of Bamfield and Anacla.

Bamfield

Anacla



Project Website

[huuayaht.org/huu-ay-aht-framework-plan](http://huuayaht.org/huu-ay-aht-framework-plan)



Facebook

Huu-ay-aht Framework Plan



ANCIENT SPIRIT, MODERN MIND

Forum

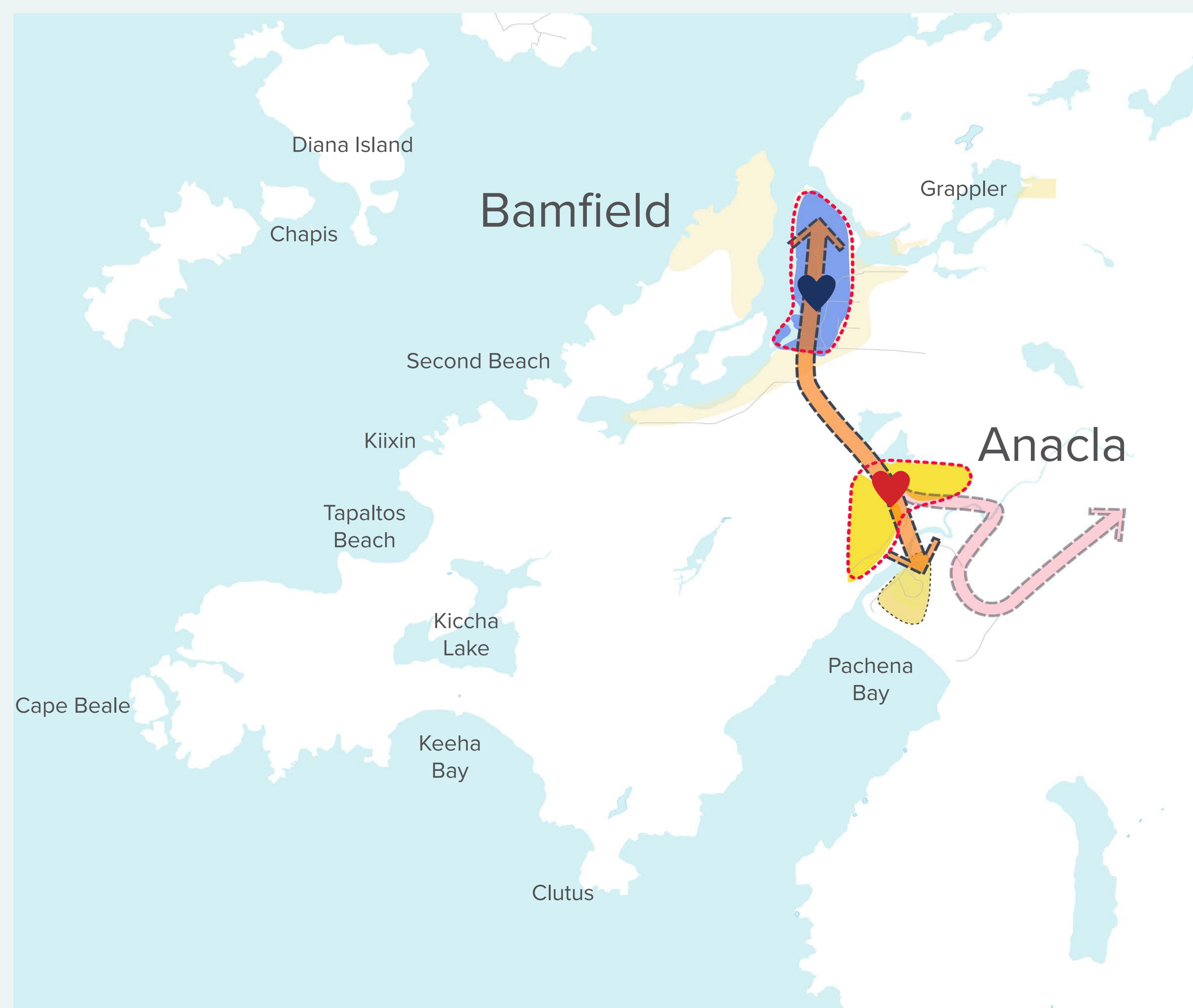
URBAN  
STRATEGIES  
INC.



# Idea 2



## HUU-AY-AHT FIRST NATIONS FRAMEWORK PLAN

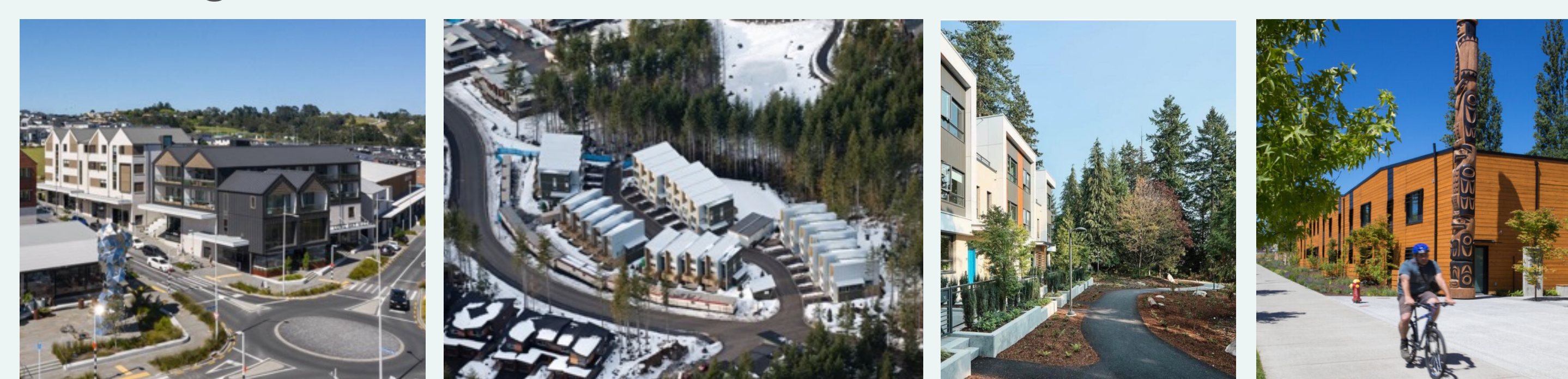


- Anacla
- Bamfield
- Expanded Communities
- Community Connector
- Reconciliation Road
- Village Centre
- Tourism Destination

## Expand Anacla and Bamfield as distinct yet complementary communities

While Bamfield and Anacla will provide opportunities for housing, community amenities, commercial areas and business opportunities, we envisage Anacla evolving with a focus around serving Huu-ay-aht citizens. Both communities will accommodate a range of uses. Connections between Anacla and Bamfield will be strengthened by a community connector (upgrades to make walking and cycling safer).

### Housing



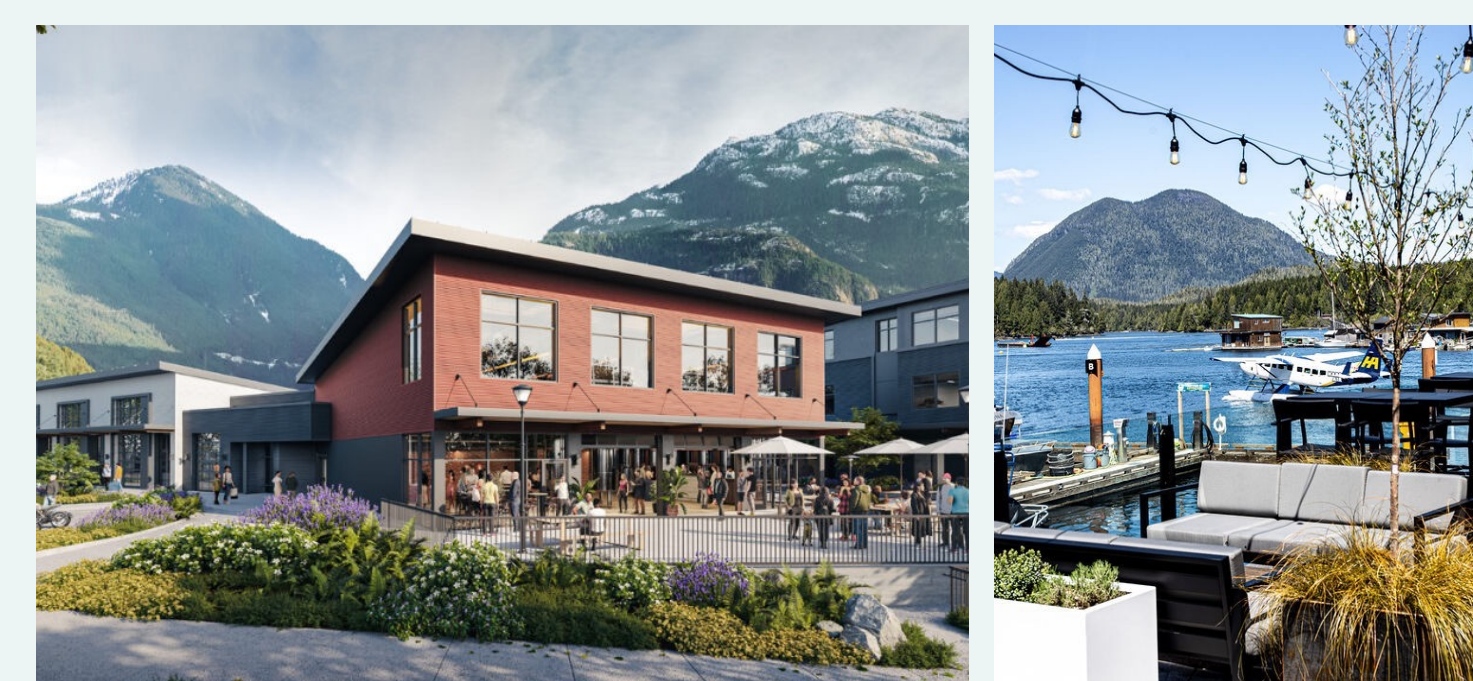
### Community Amenities



### Tourism



### Commercial Areas



### Community Connector



## Tell us what you think!

Do you agree with Anacla and Bamfield evolving with different focuses, to be distinct yet complementary?



Project Website

[huuayaht.org/huu-ay-aht-framework-plan](https://huuayaht.org/huu-ay-aht-framework-plan)



Facebook

Huu-ay-aht Framework Plan



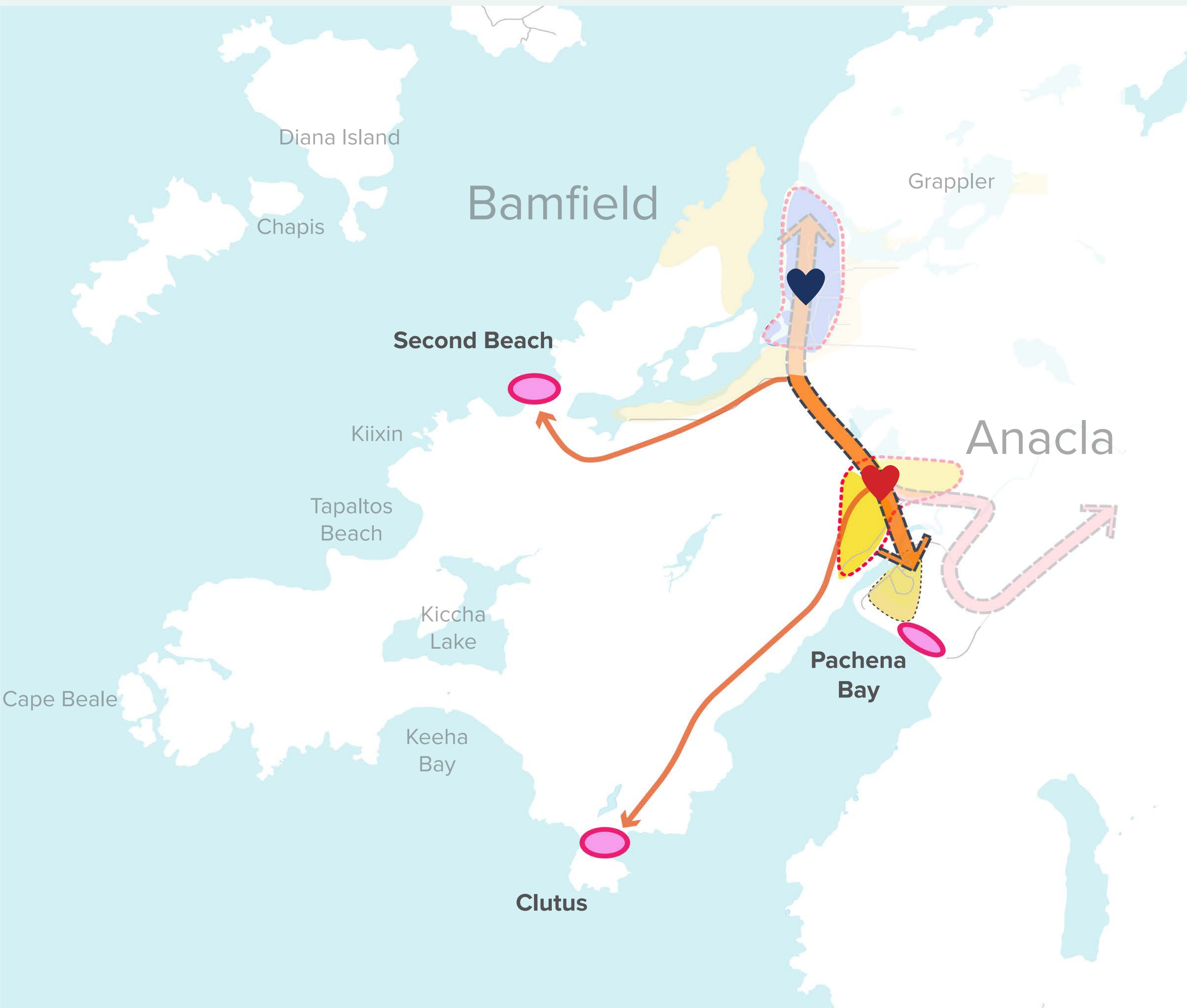
ANCIENT SPIRIT, MODERN MIND

Forum

URBAN  
STRATEGIES  
INC.



# Idea 3



- Anacla
- Bamfield
- Expanded Communities
- Community Connector
- Reconciliation Road
- Village Centre
- Tourism Destination

## Focus on creating three distinct and easily accessible tourism landmarks to support Bamfield and Anacla’s economy

Second Beach, Pachena Bay and Clutus will provide great opportunities for tourism destinations. Uses envisaged here may include:

### Hotels



### Cabins



### Lodges



## Tell us what you think!

Do you support better access and amenities at Second Beach, Pachena Bay, and Clutus? What additional ideas do you want to see?





# Idea 4



**HUU-AY-AHT FIRST NATIONS  
FRAMEWORK PLAN**

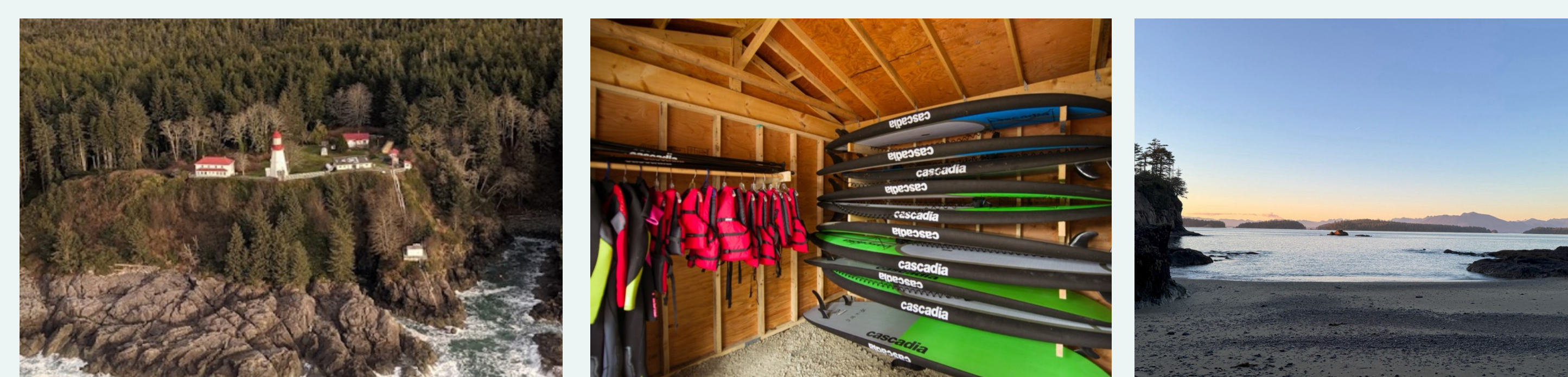


- Anacla
- Bamfield
- Expanded Communities
- Community Connector
- Reconciliation Road
- Village Centre
- Tourism Destination
- Arrival Point
- Natural/Cultural Destination
- Multiuse Trail Network
- Parks and Natural Areas

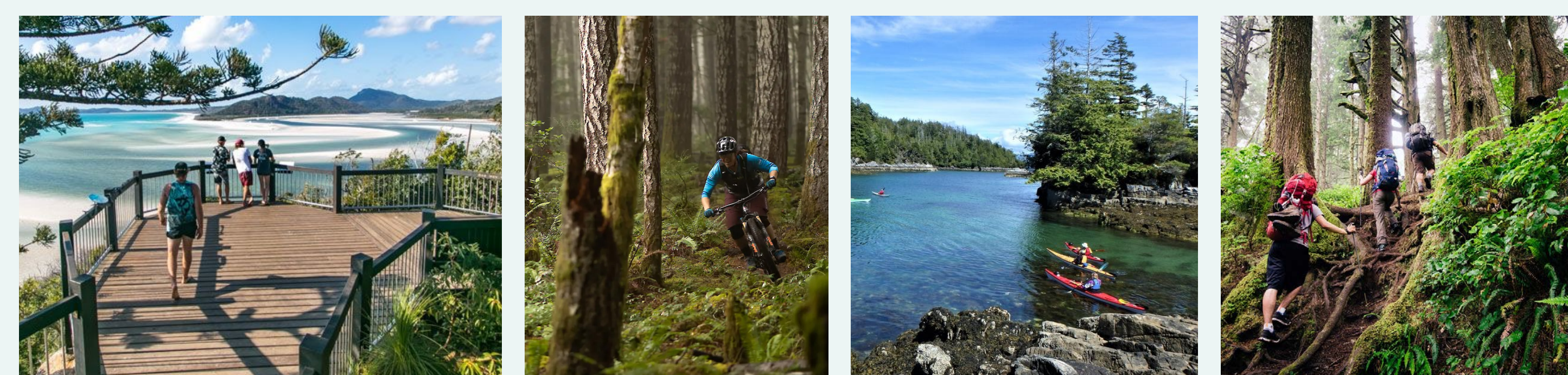
## Create an interconnected coastline with an array of experiences, attractions, and cultural learning opportunities

The coastline is filled with beautiful natural destinations that attract tourists to experience the lands while learning more about the culture.

### Attractions



### Experiences



### Cultural Learning



## Tell us what you think!

Do you like the idea of dotting the coastline with a range of experiences, attractions, and cultural learning opportunities?



**Project Website**  
[huuayaht.org/huu-ay-aht-framework-plan](http://huuayaht.org/huu-ay-aht-framework-plan)



**Facebook**  
Huu-ay-aht Framework Plan



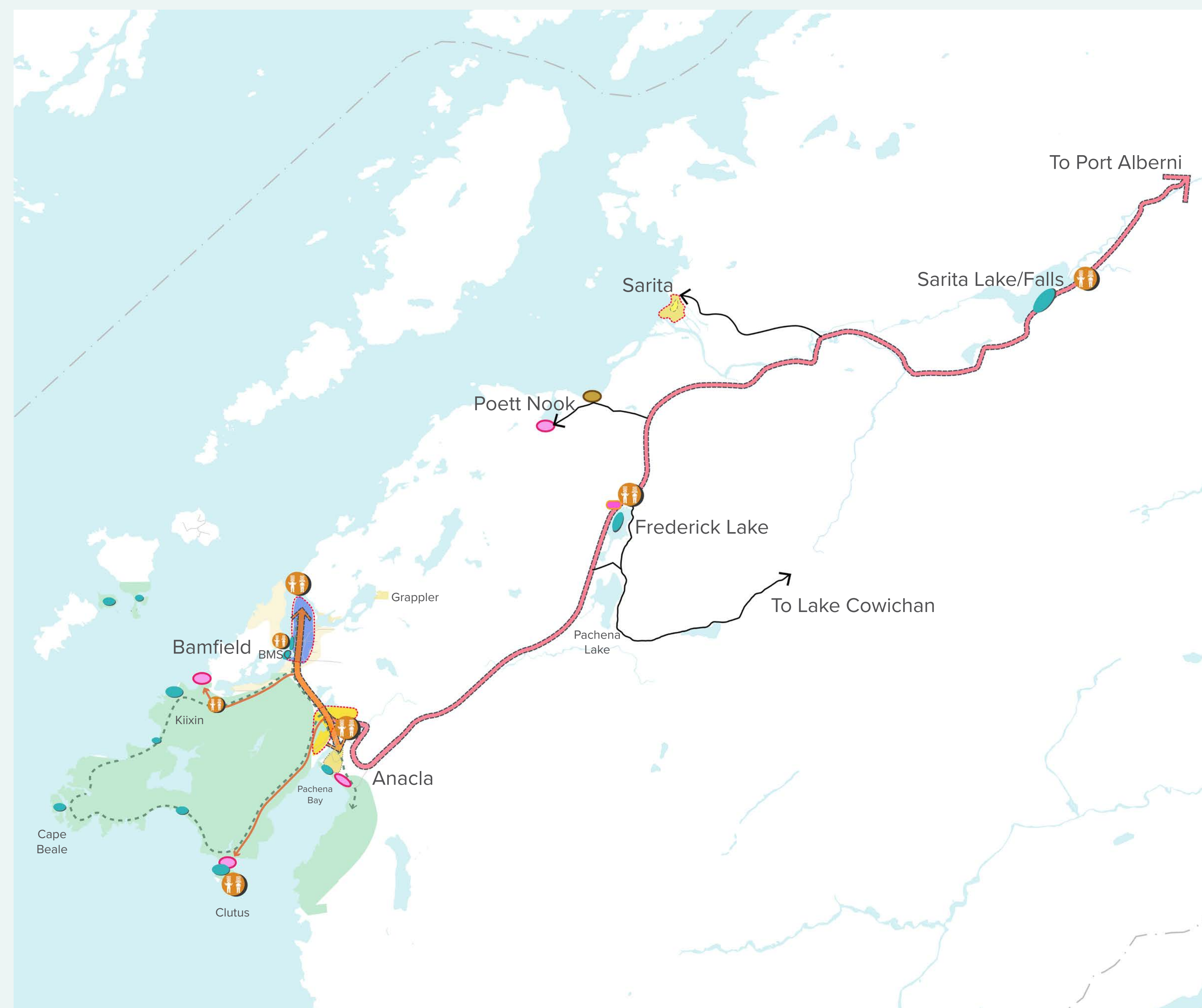
**Forum** **URBAN STRATEGIES INC.**



# Idea 5



**HUU-AY-AHT FIRST NATIONS  
FRAMEWORK PLAN**

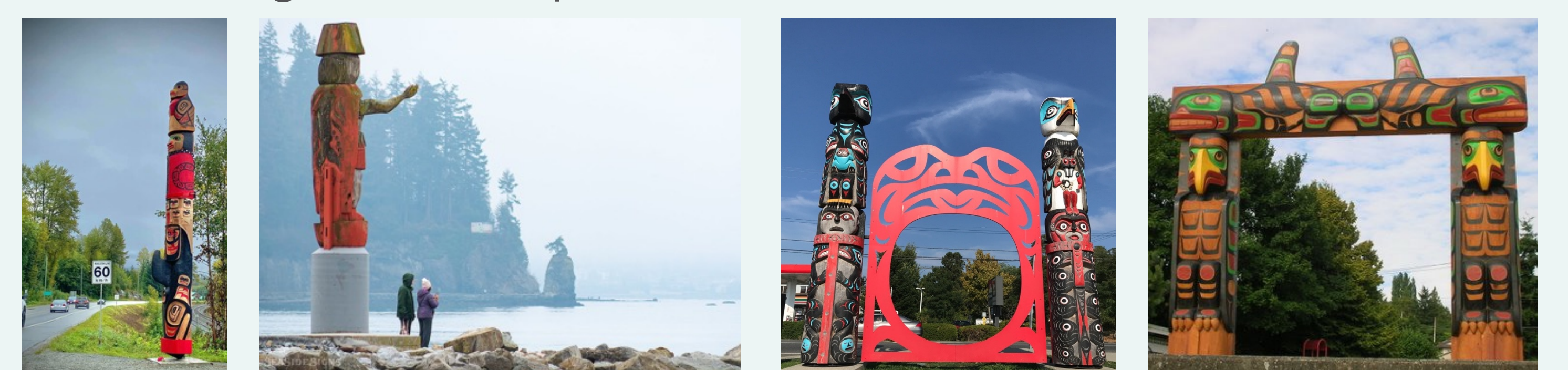


- Anacla
- Bamfield
- Expanded Communities
- Community Connector
- Reconciliation Road
- Village Centre
- Tourism Destination
- Arrival Point
- Natural/Cultural Destination
- Multiuse Trail Network
- Parks and Natural Areas

## Introduce secondary points of interest along the Bamfield Main Road that showcase the lands.

Along Bamfield Main Road, there exists many natural destinations which can be activated through activities, signage, and welcome land marks. Some ideas include:

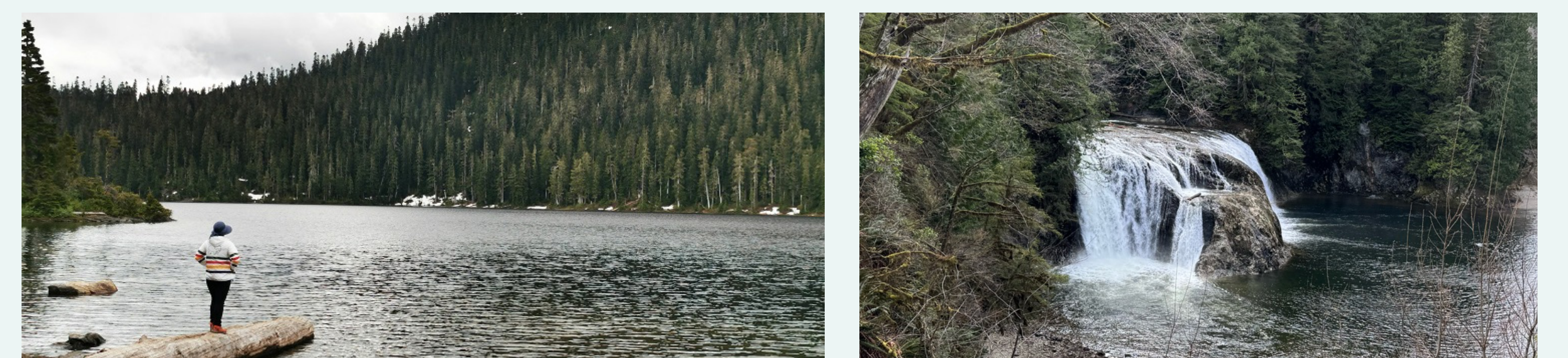
### Introducing welcome points



Activate places like Frederick Lake and Sarita Lake with programs and activities



Celebrate historic places like Sarita and natural features like Sarita Falls



## Tell us what you think!

Do you agree with these opportunities? What other ideas do you have?



Project Website

[huuayaht.org/huu-ay-aht-framework-plan](https://huuayaht.org/huu-ay-aht-framework-plan)



Facebook

Huu-ay-aht Framework Plan



ANCIENT SPIRIT, MODERN MIND

Forum

URBAN  
STRATEGIES  
INC.