



**HUU-AY-AHT FIRST NATIONS
FRAMEWORK PLAN**

Project Vision

Open House #2

June 2024



huu ay aht
ANCIENT SPIRIT, MODERN MIND

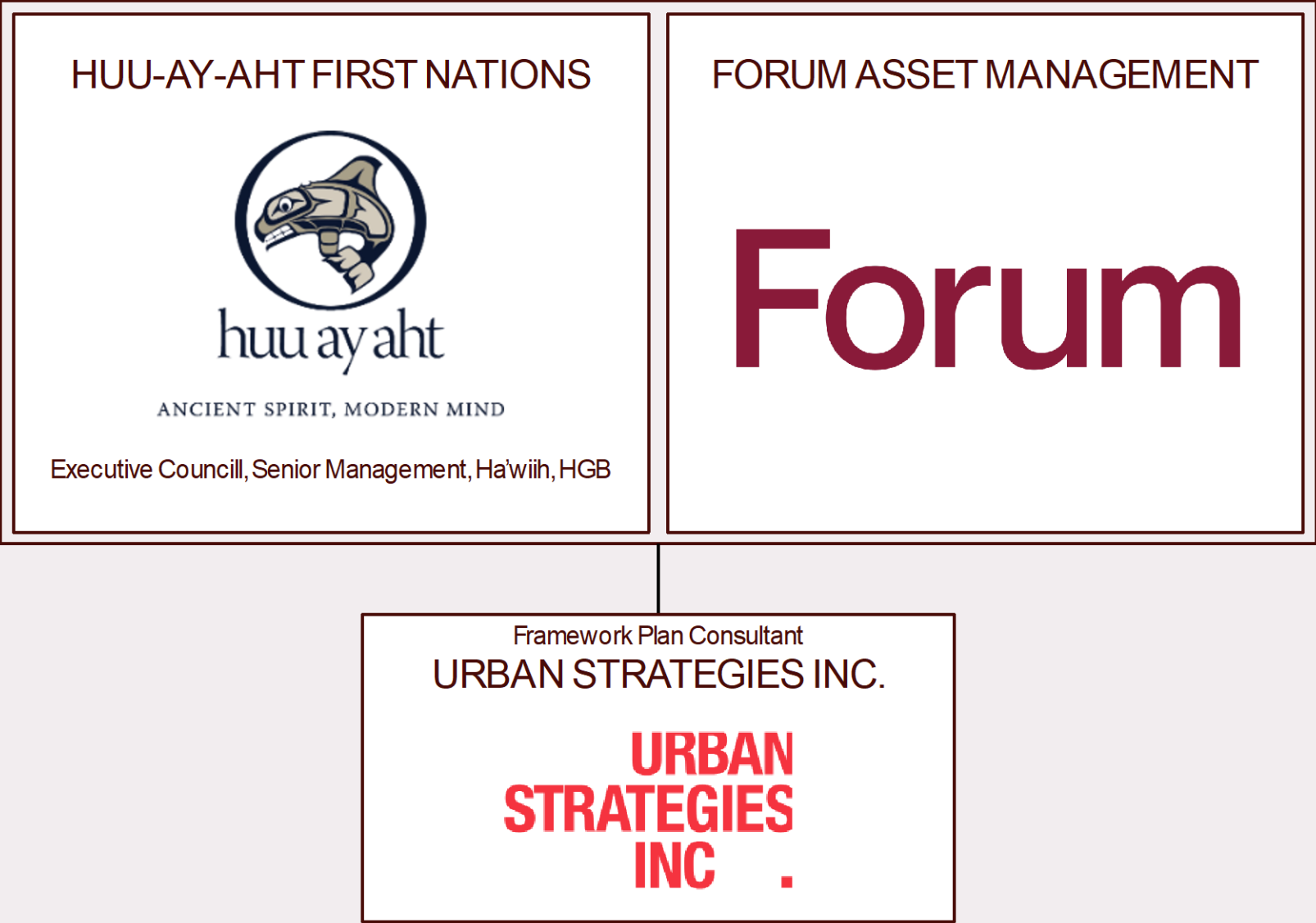
Forum

**URBAN
STRATEGIES
INC .**



01

Introductions



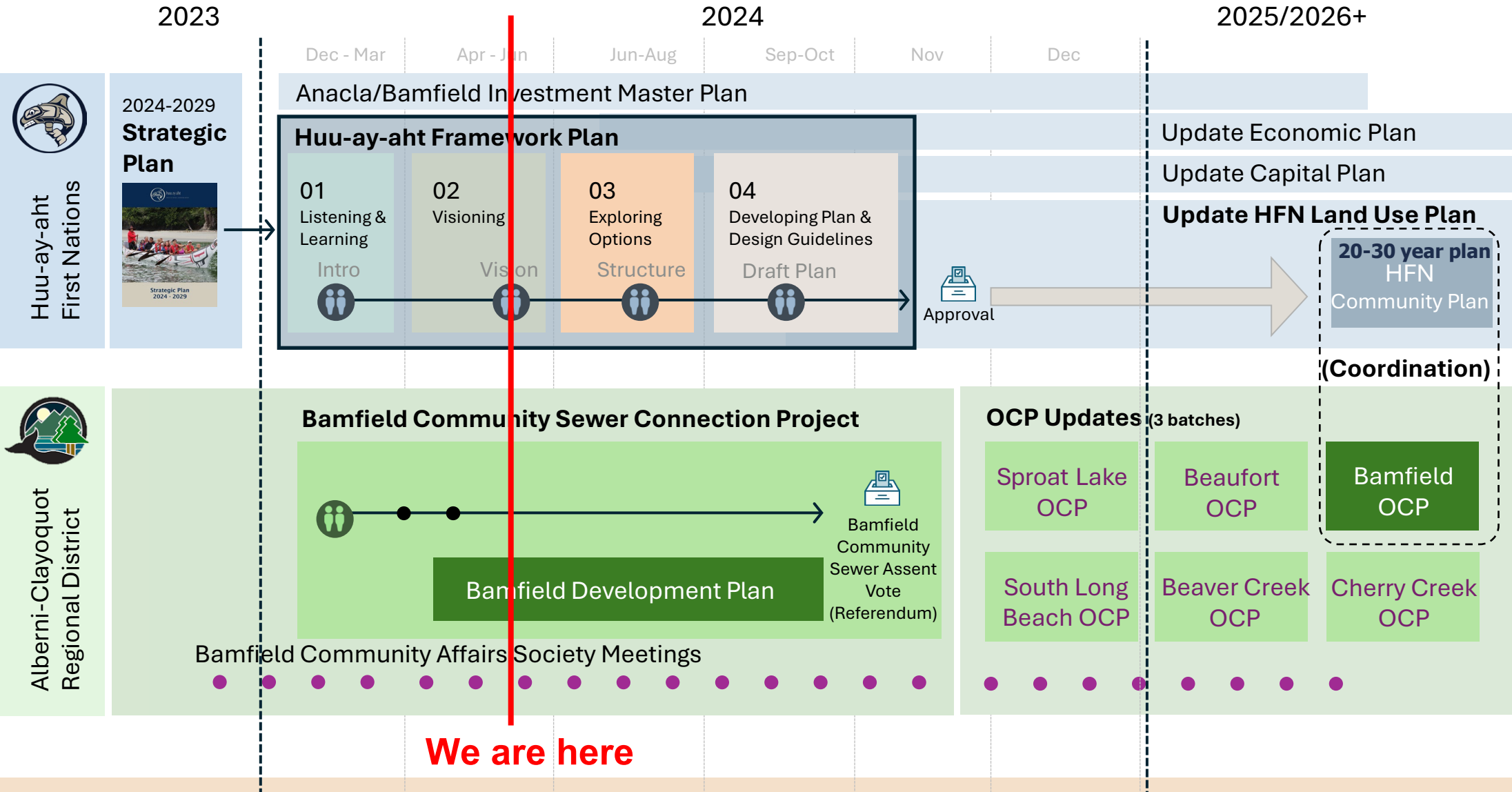


02

About the HFN Framework Plan

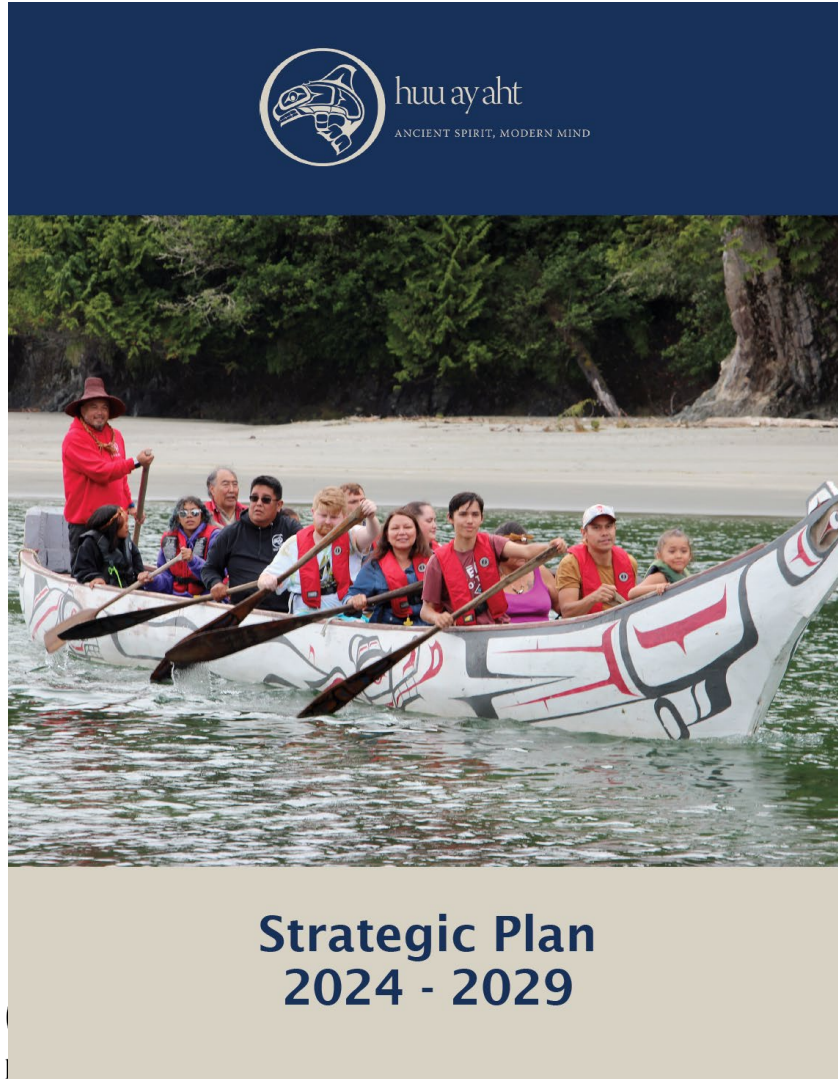
We are here to introduce the HFN Framework Plan

One of many projects being advanced by the Huu-ay-aht Government



The HFN Strategic Plan is an excellent foundation

2024-2028 HFN Strategic Plan



Vision

Huu-ay-aht envisions a strong, self-governing, and self-reliant Nation. ʔiisaak, hišuk ma cʰawak and ʔuuʔaʔuk guide us as we work together to foster a safe, healthy and sustainable Nation where our culture, language, spirituality, and economy flourish.

Mission

As a leader among First Nations, Huu-ay-aht First Nations will create certainty for its people and generate wealth for financial independence by providing economic opportunities, and social, cultural, and recreational programs for all Huu-ay-aht people.

*Naaca maʔaʔ Huuʔeeʔaʔh ʔaaʔak
ʔuukʷaqhʷitas ʔuuʔaʔuk quuʔas minh
ʔiisaakstaʔ ʔuusahqʷlin čačimhi
Hupukʷanim, ciqyak, ʔimaqsti, tanaqit minhukqin*

Community Wellness Vision

Our citizens are grounded in our culture, teachings, and sacred principles. Through healing, wellness, celebration, and the understanding of our Treaty, we are connected, empowered, responsible, accountable, and motivated.

The HFN Strategic Plan is an excellent foundation

2024-2028 HFN Strategic Plan

3 Sacred Principles



6 Posts for a strong Huu-ay-aht

1. Huu-ay-aht **citizens** will reach their fullest potential through self-determination.
2. Huu-ay-aht **children** will grow up safe, healthy, and connected to our language, culture and values guided by our traditions and our Nananiqsu.
3. Huu-ay-aht **ḥahuuʔi** will be a safe, healthy, thriving community where our people choose to live.
4. Ḥahuuʔi, including Huu-ay-aht **lands**, waters, natural resources and traditional teachings will provide sustainable wealth that respects Huu-ay-aht core values.
5. Huu-ay-aht **economy** will operate sustainably, will be the major employer in the ḥahuuʔi, and the major source of revenue for the Nation.
6. Huu-ay-aht will **respect** and honour tradition, customs, and hereditary leadership.



4 Strategic Priorities



- Muschuum & Maht Mahs
People and Houses
- Promote Huu-ay-aht muschuum to reside in hahuuʔi
 - Support social, cultural and spiritual knowledge, and promote overall well being



- ʔiihmisuk
To Treasures
- Attracts visitors, and supports diverse employment opportunities



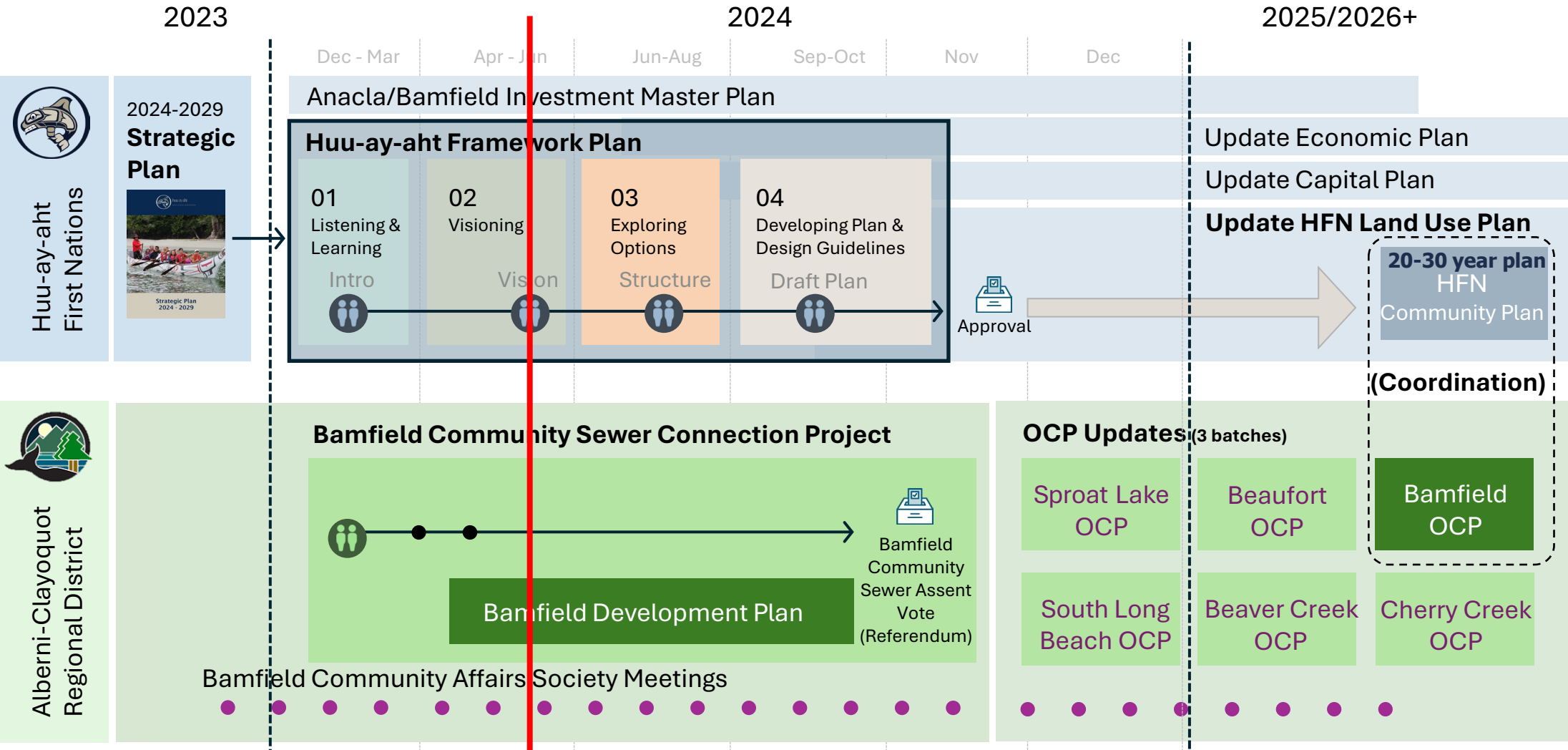
- The Ḥahuuʔi – Hišuk ma cʔawak
Integrated Lands and Resources
- Provides sustainable wealth without compromising the needs of future generations



- Ḥawil patuk Huu-ay-aht
Governance
- HFN government makes decisions



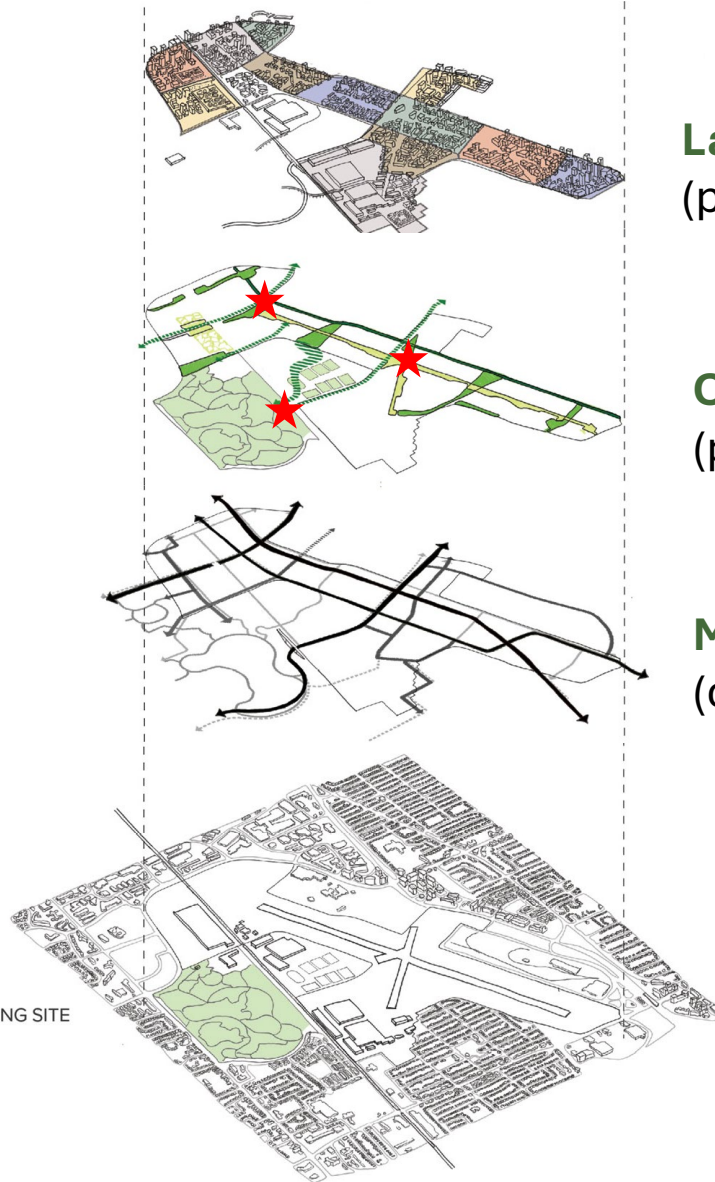
The HFN Framework Plan is one of many projects being advanced by the Huu-ay-aht Government



We are here

What is a Framework Plan?

- Will guide development for 20-30 years
- Will identify land use, open space and mobility networks within the hāhuuŋi:



Land use framework

(places to live, work, learn, and gather, etc.)

Open Space network

(parks, beaches, and open spaces)

Mobility Network

(connections, roads, trails, multi-use paths, etc.)



HFN Framework Plan: Project Timeline



We are here

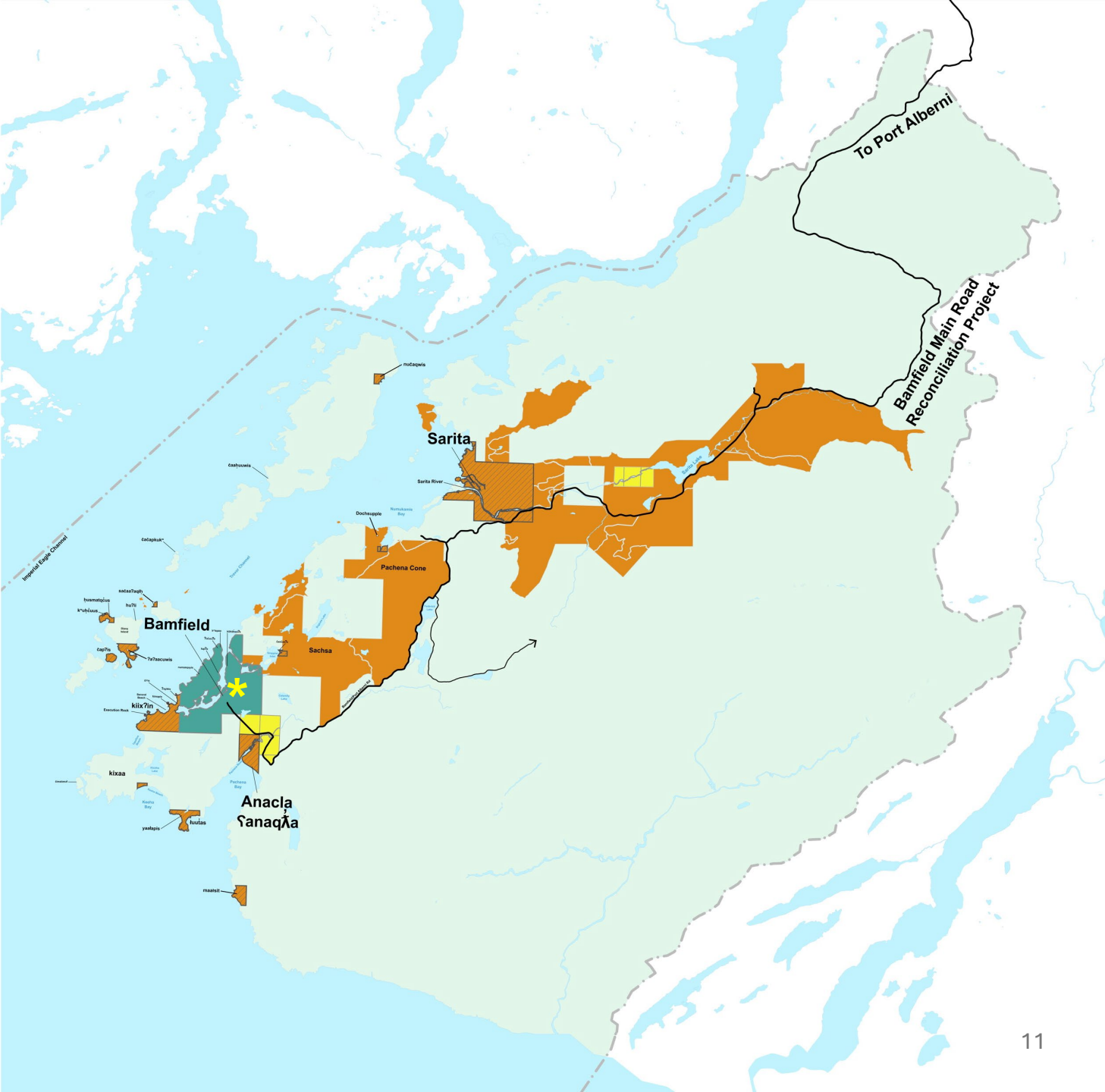
Scope of the Framework Plan

Within scope of the Framework Plan

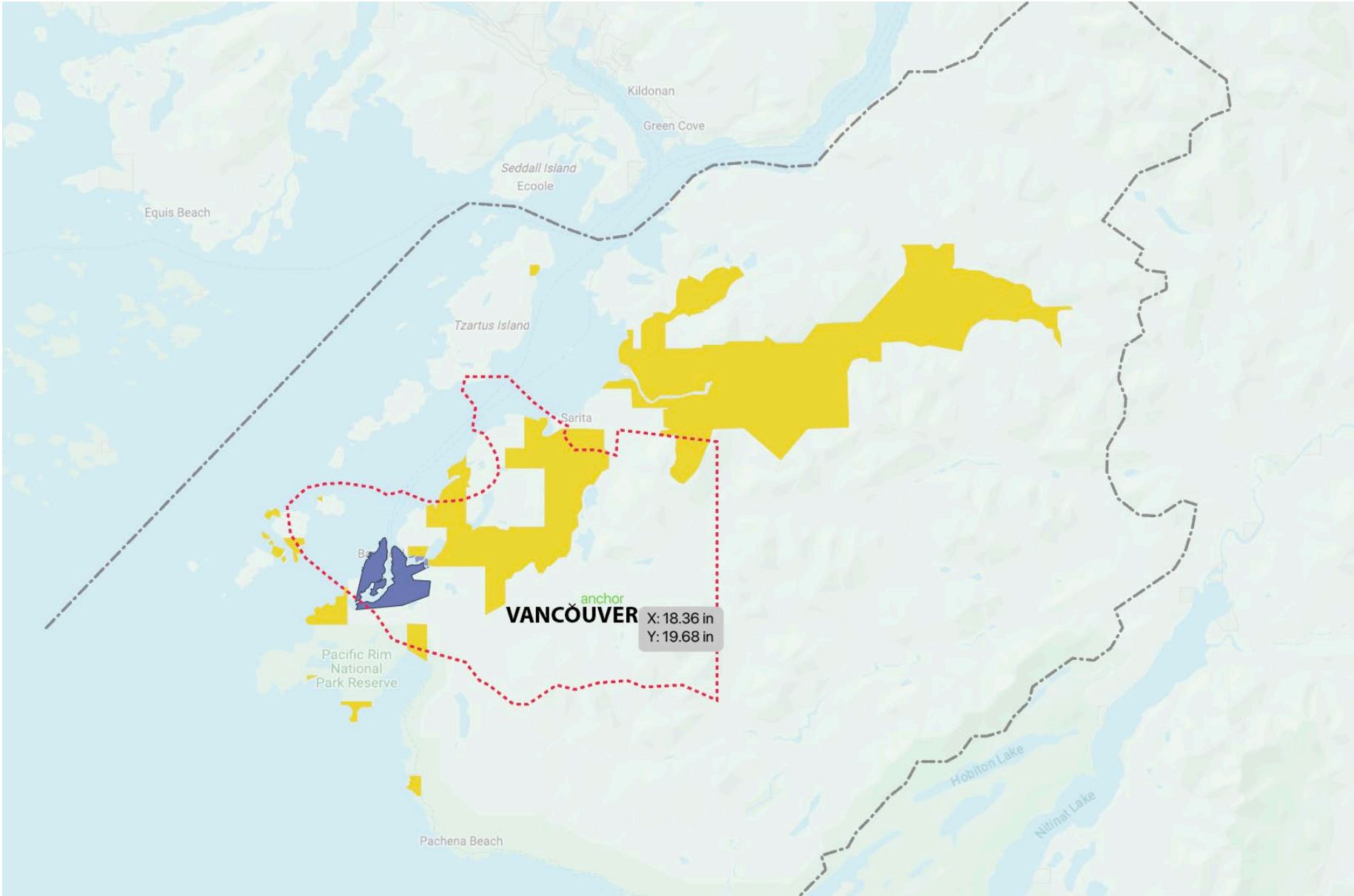
-  Treaty Settlement Lands
-  Former Indian Reserves
-  Non-treaty privately owned lands
-  HFN parcels owned within Bamfield

Not within scope of the Framework Plan

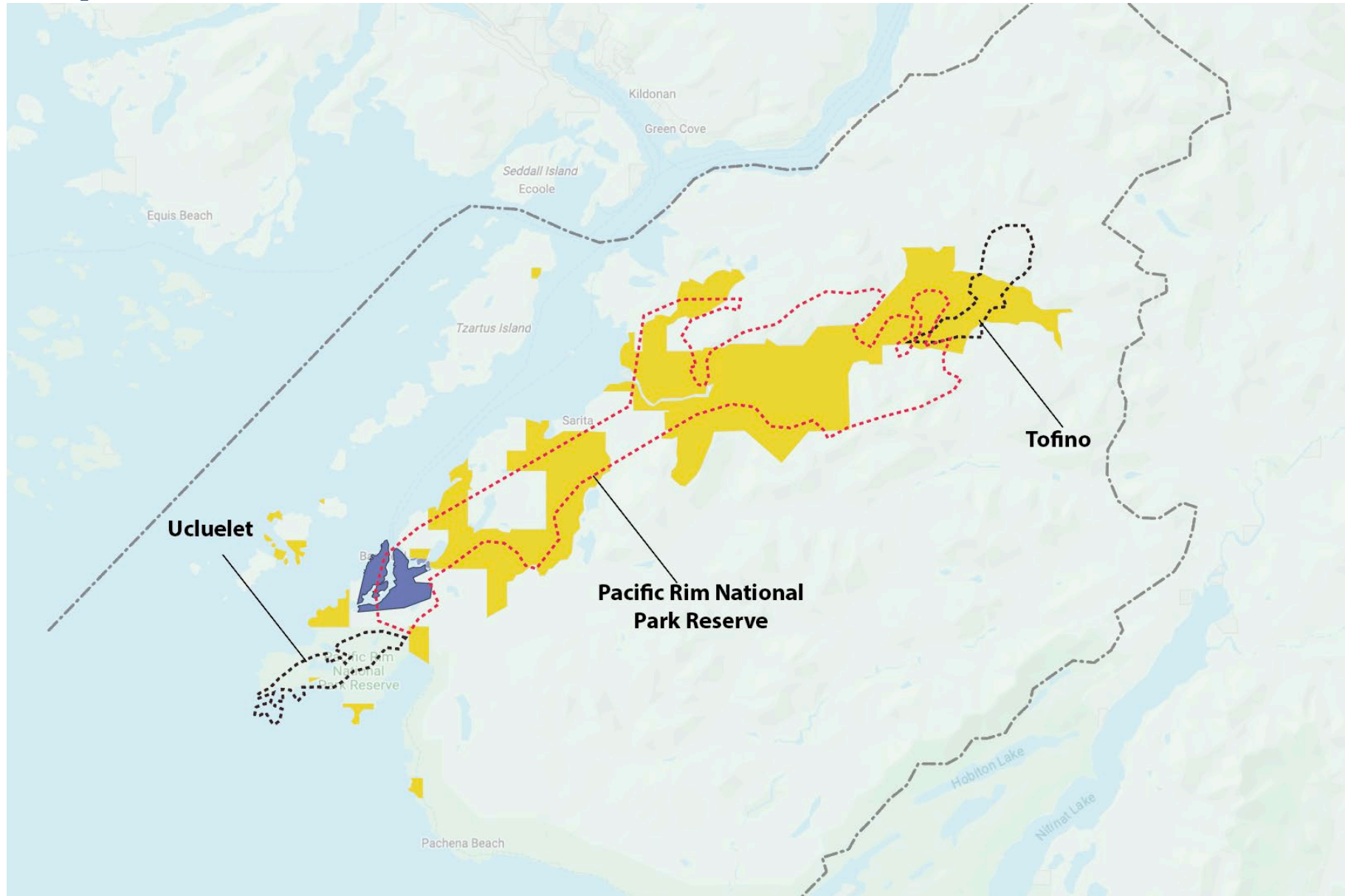
-  Bamfield
-  Non-treaty land



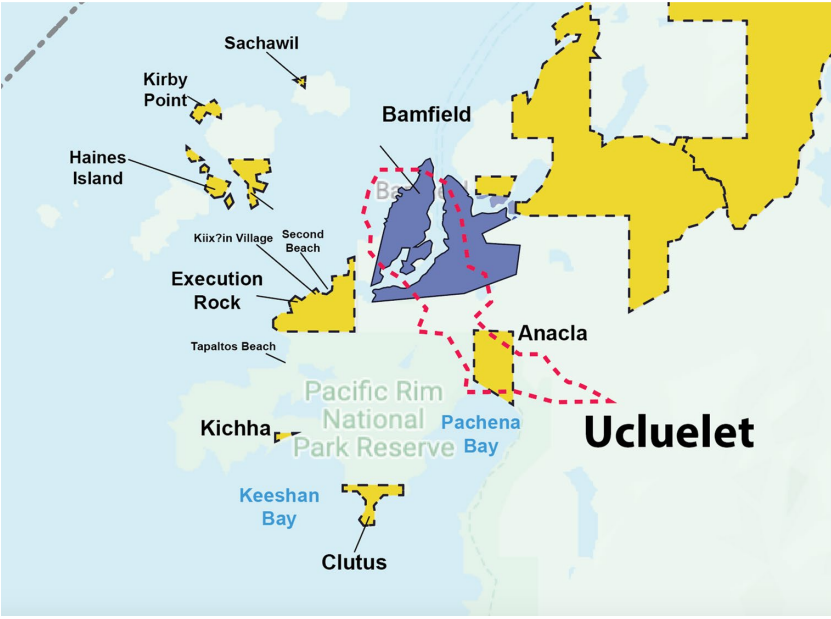
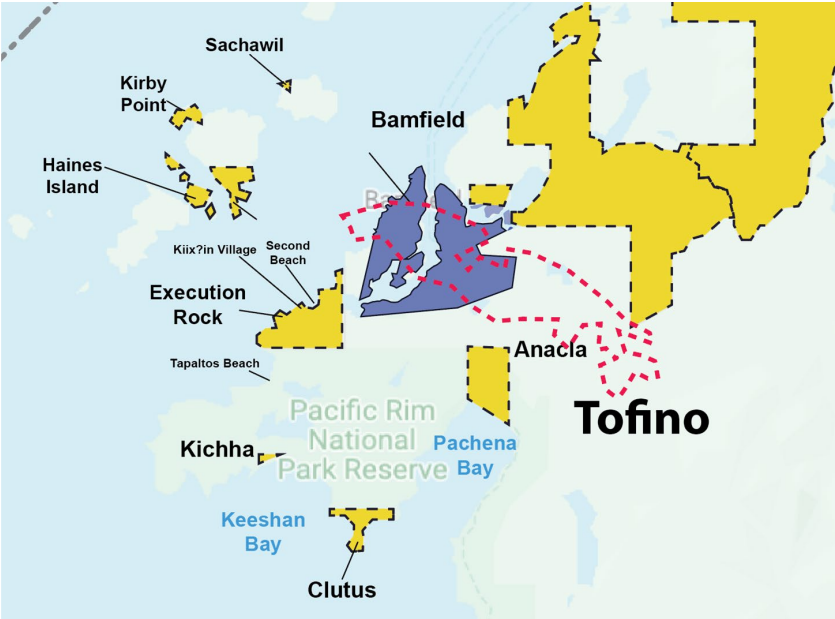
Scale Comparison - Vancouver



Scale Comparison – Tofino to Ucluelet



Scale Comparison





03

Challenges & Opportunities

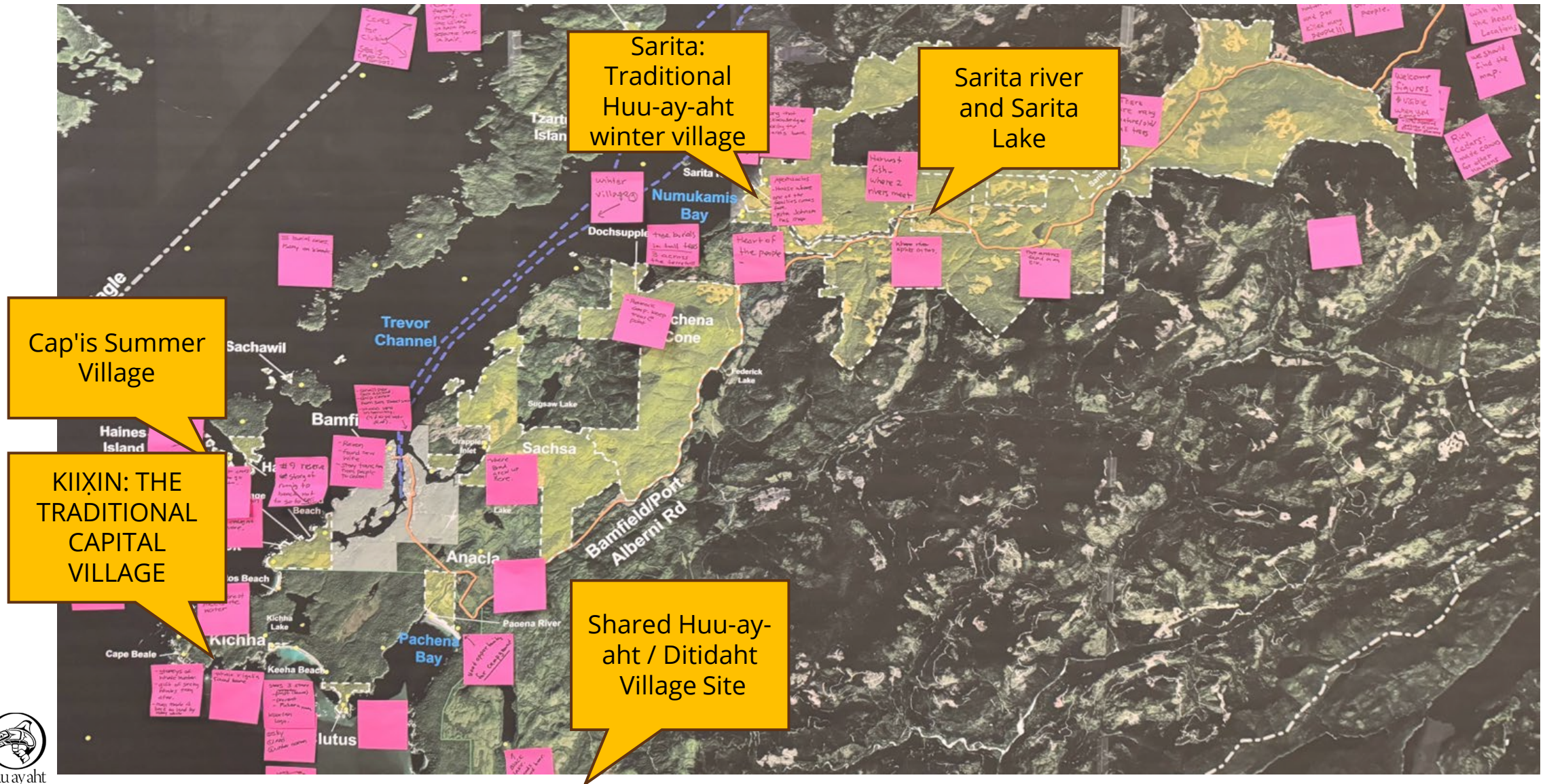
We met with the community & knowledge keepers



We learned about the history of the ɥahuuɫi



We learned about the history of the ḥahuuḥi



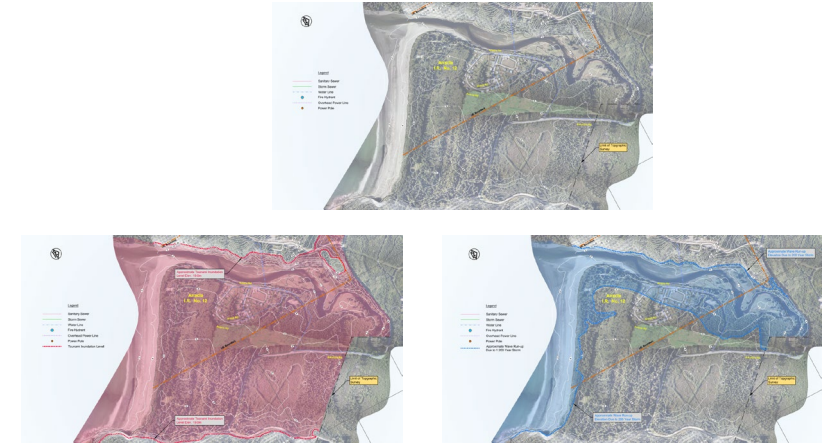
We are learning about the lands



Community Development Presentation, 2022



Citizen's Priorities, 2021



Anacla Coastal Vulnerability Study, 2019



HFN Strategic Plan, 2024-2029



Site Tours (February 2024)

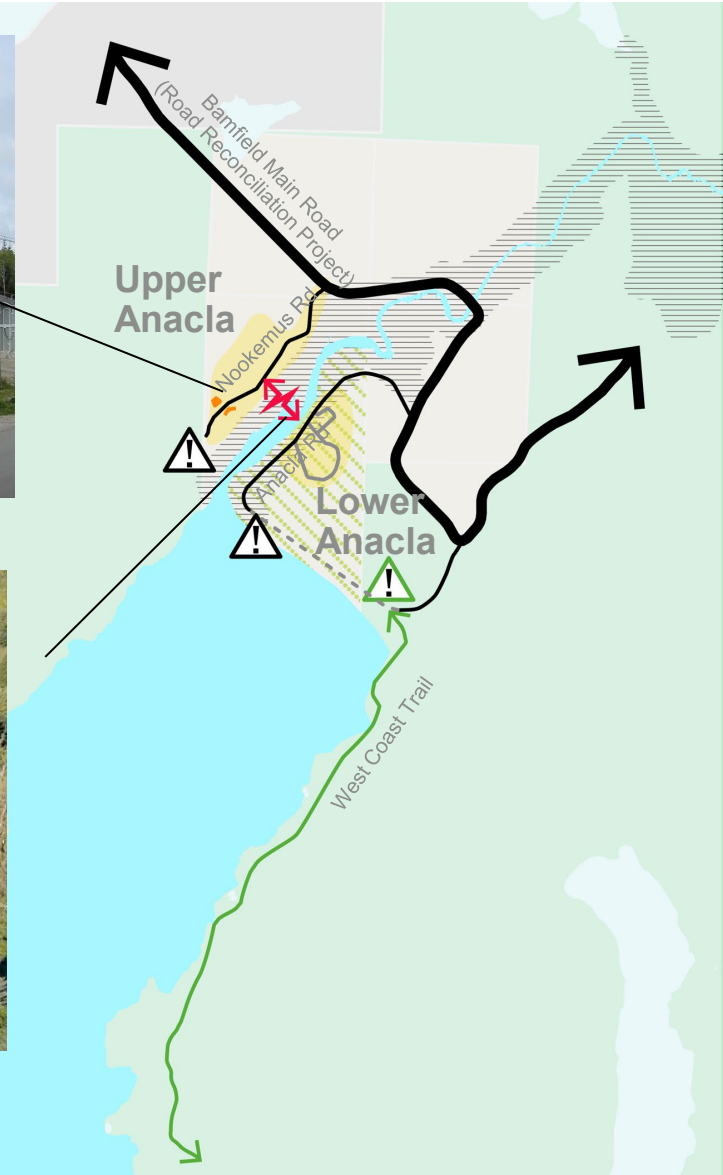
Upper and Lower Anacla are not well-connected



In recent decades, new development has been focused in Upper Anacapa, outside of the flood limit and tsunami areas.



There is no connection between Upper and Lower Anacala.



Upper and Lower Anacra are not well-connected

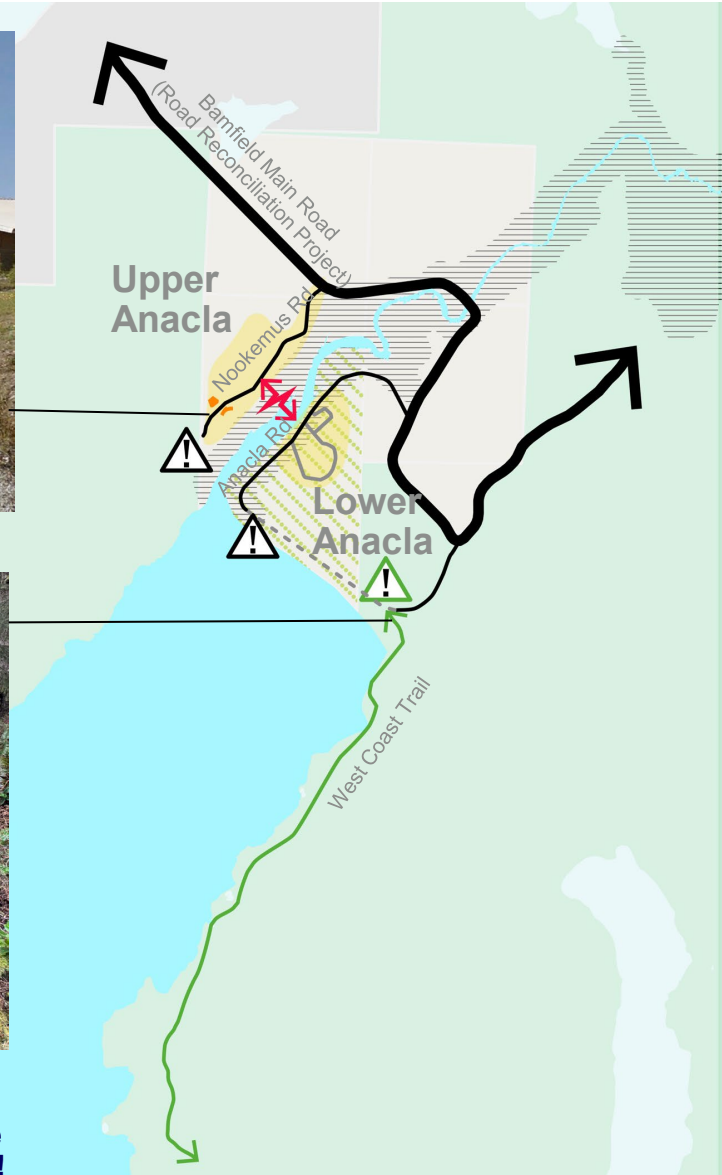


Nookemus Road and Anacra Road abruptly end.



Trailhead for West Coast Trail is undefined.

Trail abruptly ends with no continuity to the rest of the mobility network. There is no sense of arrival or finish!



Getting around is challenging



Streets are designed primarily for car movement. There are few amenities to make travelling comfortable for cyclists or pedestrians.

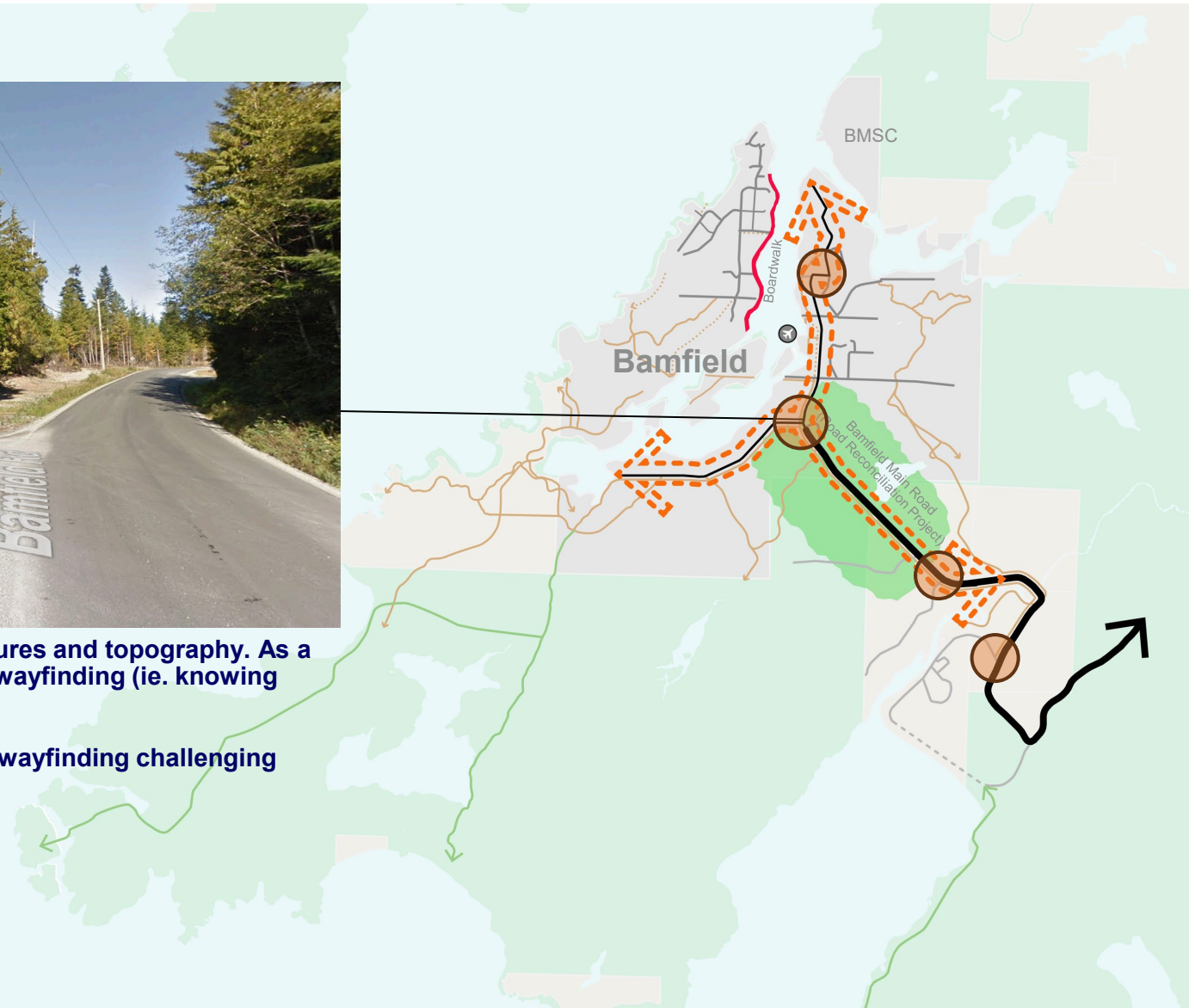


Getting around is challenging

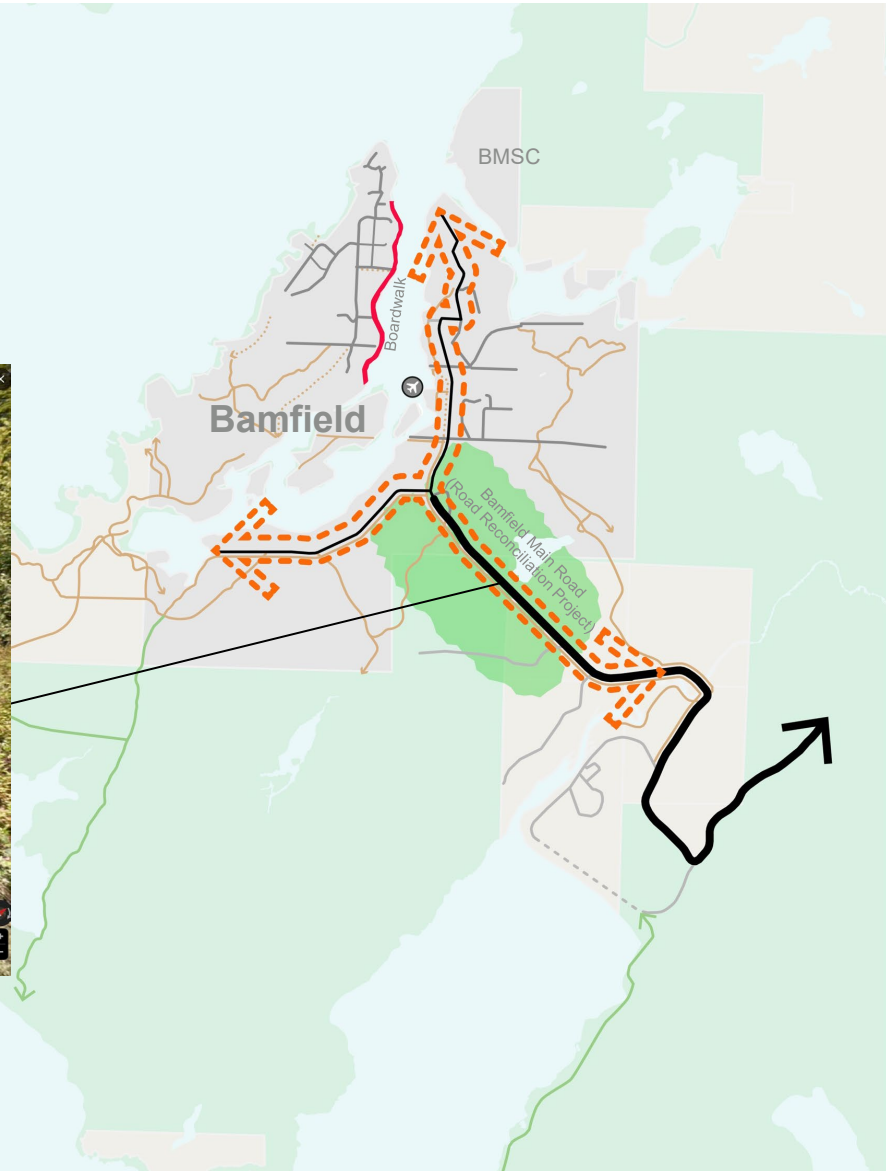


Many streets are designed around natural features and topography. As a result, the street pattern is circuitous, making wayfinding (ie. knowing how to get around) challenging.

Critical junctures are not well defined, making wayfinding challenging and create unsafe intersections.



Getting around is challenging

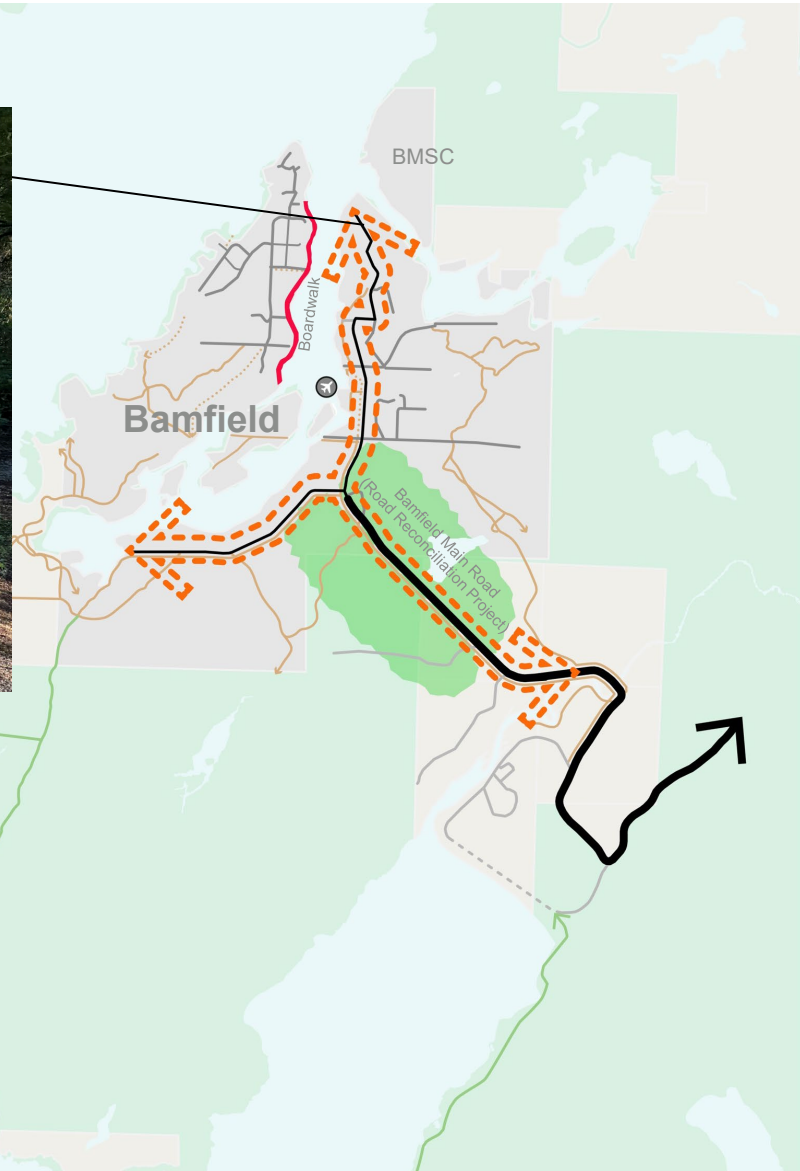


Threshold between Bamfield and Anacla is poorly defined.

Getting around is challenging



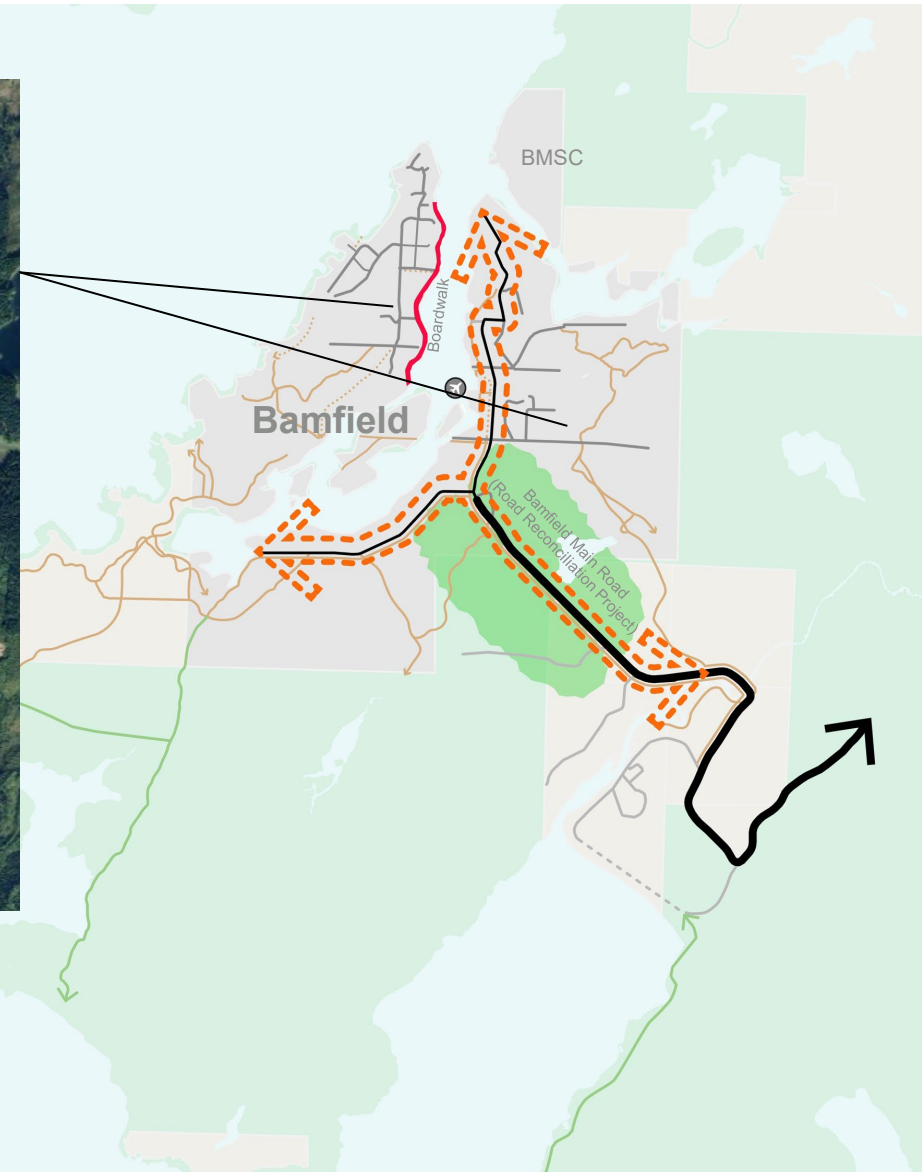
Some destinations like Bamfield Marine Science Centre are difficult to find and hard to get to!



Getting around is challenging



Mobility network lacks hierarchy.



Open spaces along the coastline are difficult to access



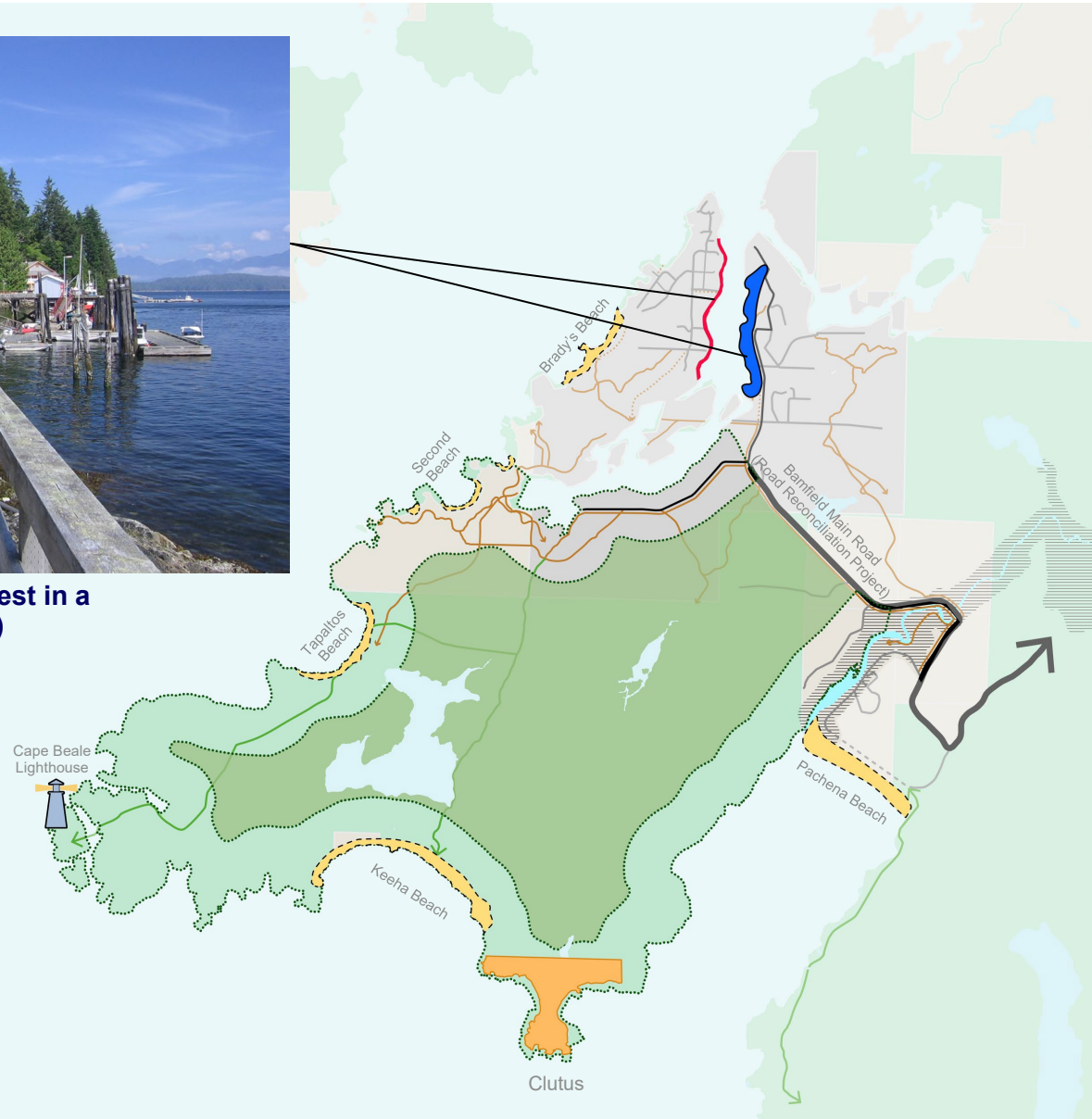
East Bamfield Waterfront has poor frontage, address, and access.



Open spaces along the coastline are difficult to access



Opportunity to provide access and invest in a continuous waterfront. Boardwalk, etc)



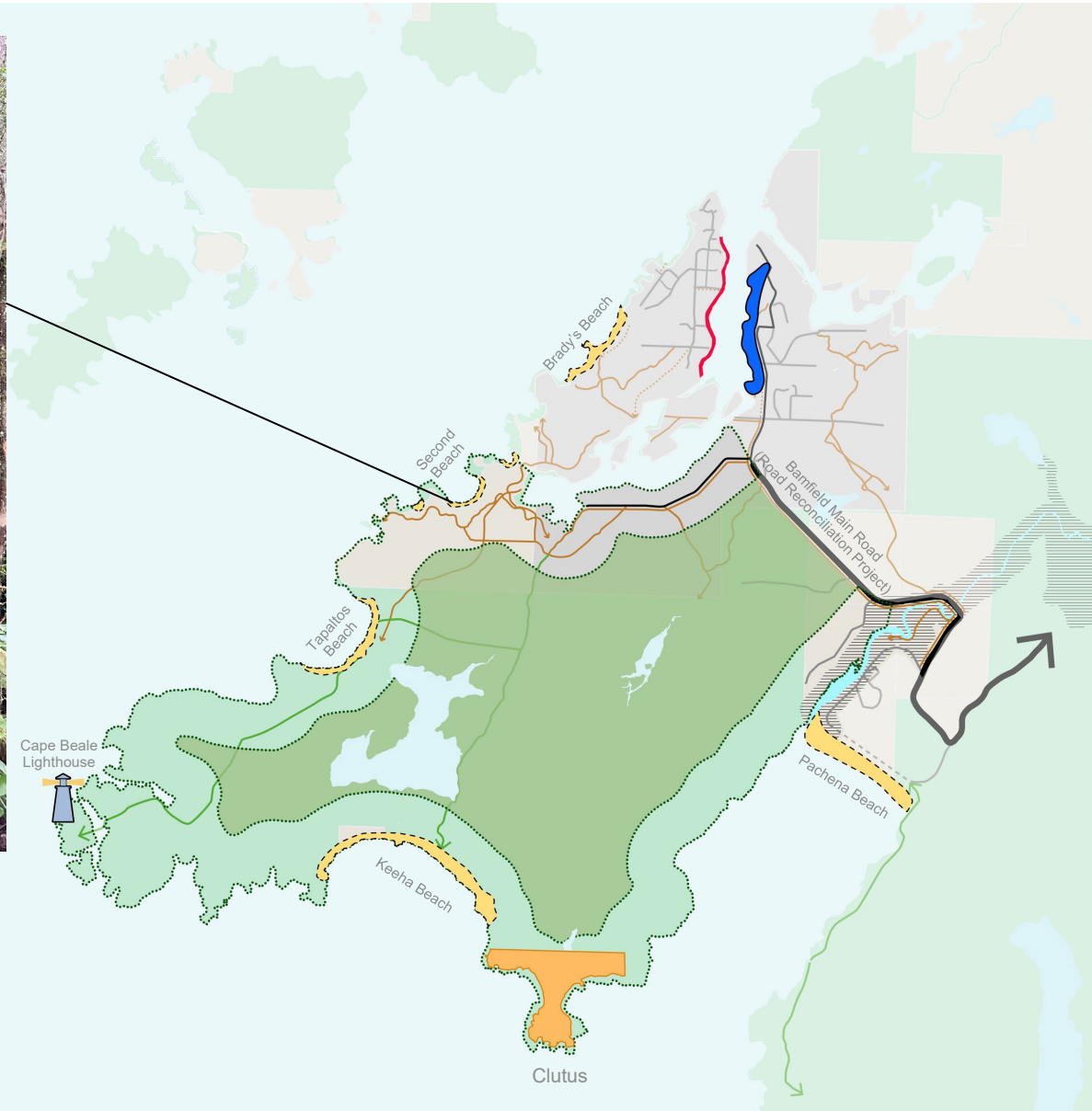
Open spaces along the coastline are difficult to access



Access to landmarks and open spaces is challenging.

Trails along natural areas are fragmented.

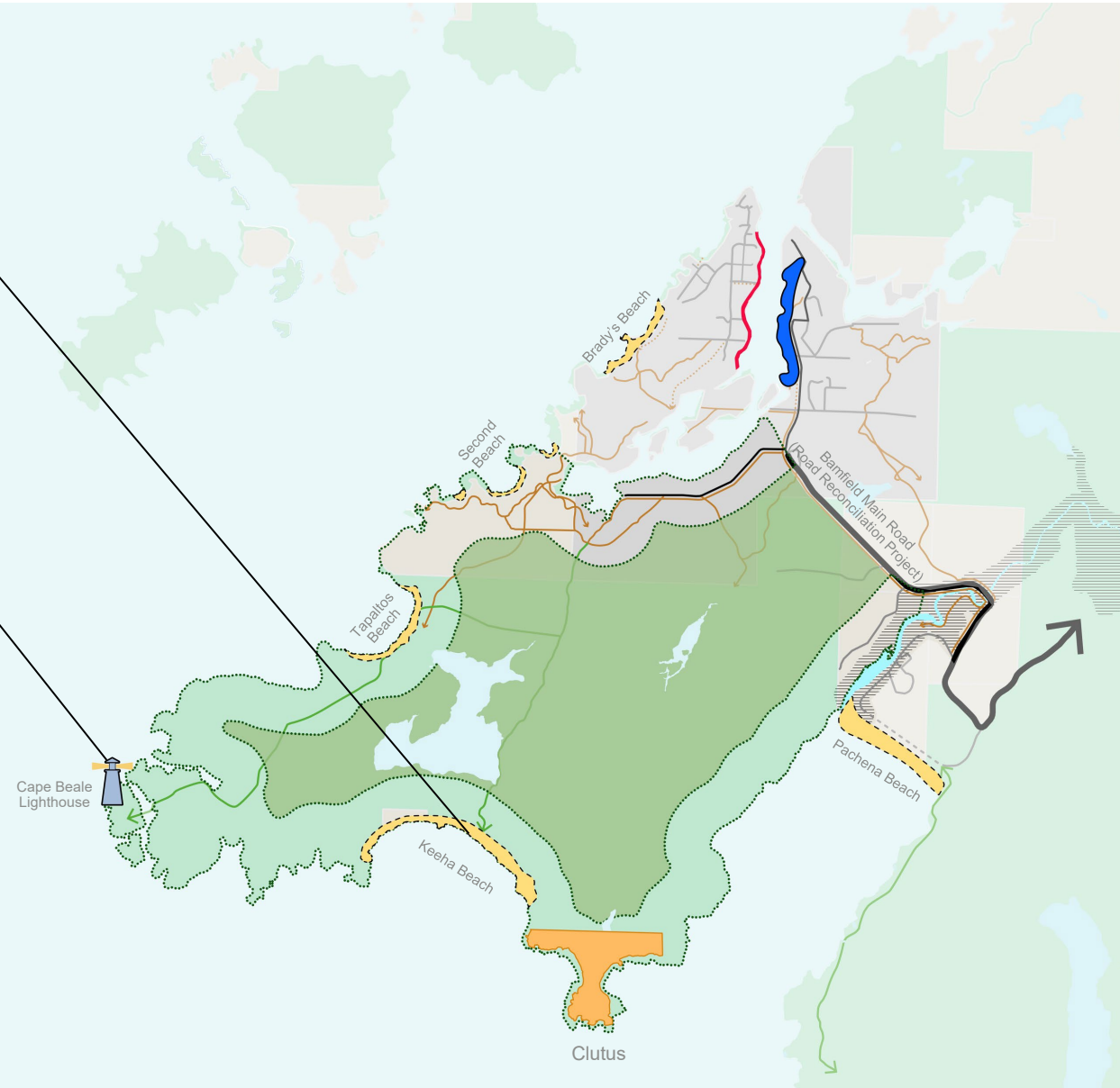
No clear or continuous trail along waterfront edge.



Open spaces along the coastline are difficult to access



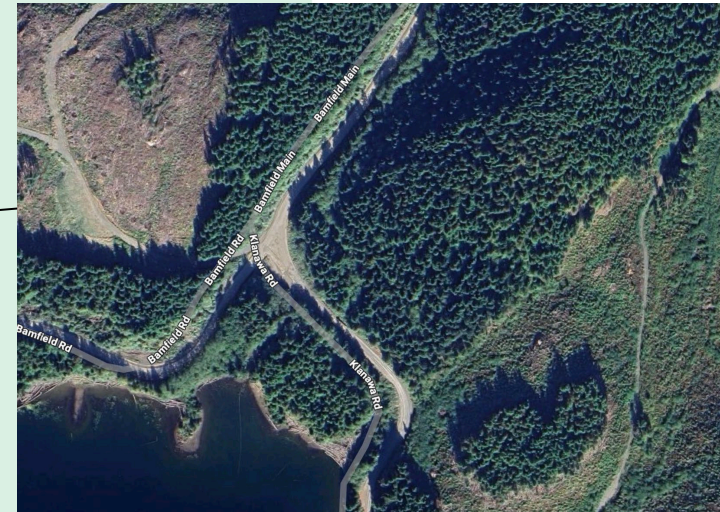
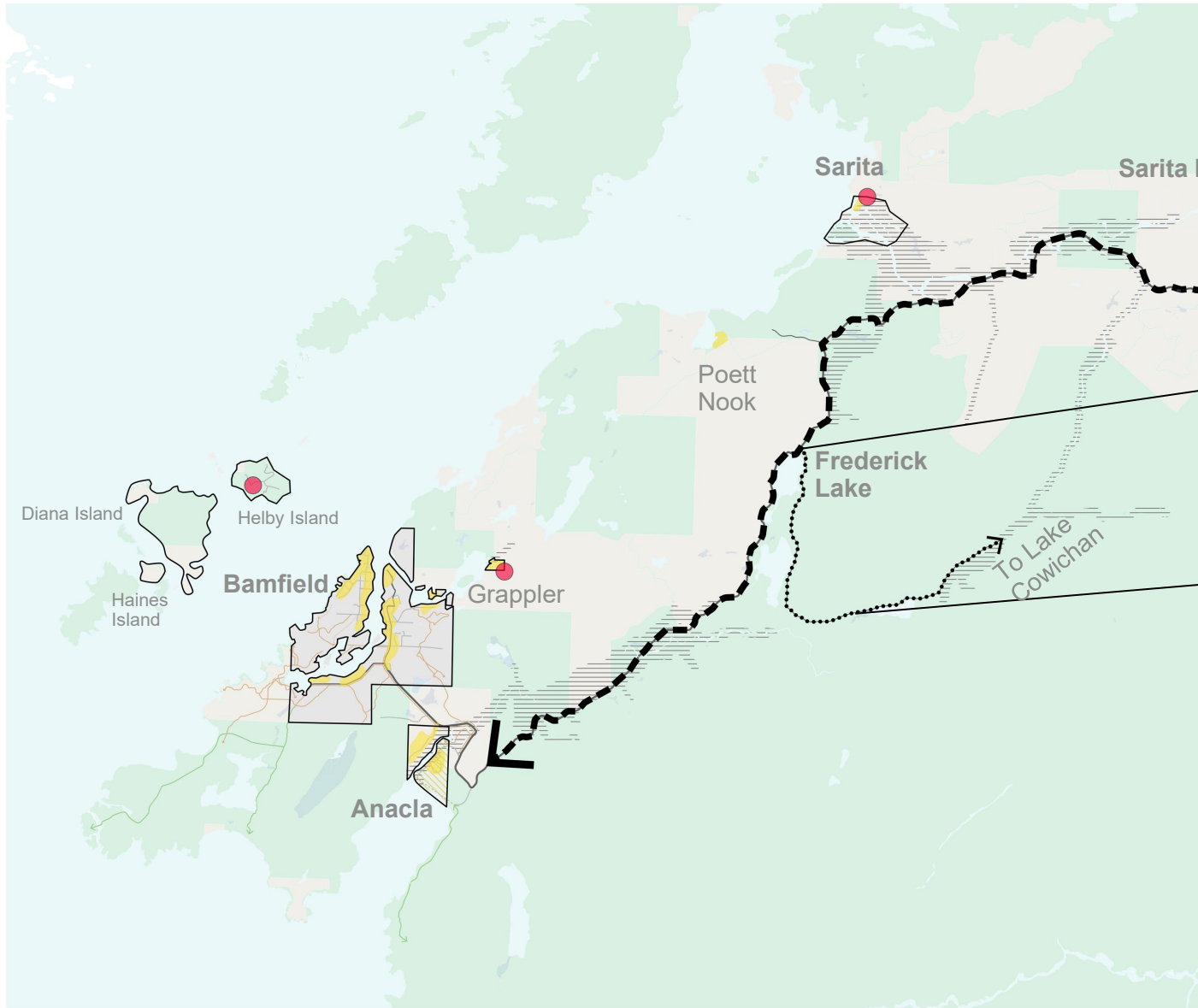
The coastline is dotted with beaches and landmarks (ie. lighthouses). However, these spaces are not easily accessible. There are opportunities to better utilize and access special areas and landmarks along the coastline.



Connections to points of interest are limited



Connections to points of interest are limited



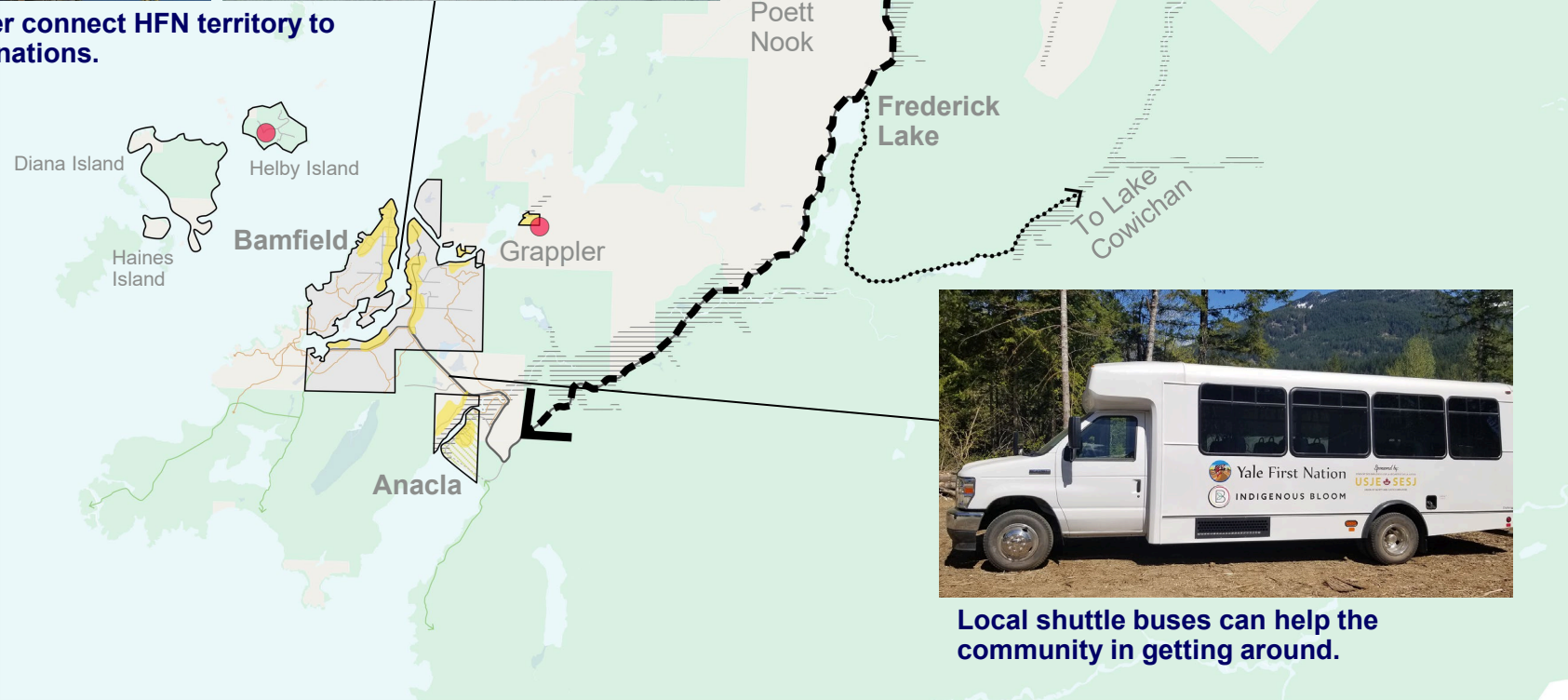
Road to Lake Cowichan is not easily accessible, making the Bamfield Main Road the primary method to access lands. There is no reliable alternative way to access the lands.



Connections to points of interest are limited



Opportunity to better connect HFN territory to other regional destinations.



Local shuttle buses can help the community in getting around.



04

Engagement & What We've Heard to Date



2 Open Houses

1 Virtual Meeting

63 Attendees

4 Meetings with Interest Holders

ACRD ELECTED OFFICIALS
ACRD PLANNING STAFF
BAMFIELD CRA



Key Themes from Citizen and Community Feedback

1. Plan for a diversity of **housing** types, tenures, and affordability levels
2. Desire for new community and recreation **facilities**
3. Desire for multi-purpose **culture and learning** spaces
4. Prioritize cultural and eco **tourism**
5. Support for sustainable and **Indigenous-owned businesses**
6. Support for **improved connections** on the lands
7. Desire to preserve **natural areas** and habitats
8. Celebrate and **promote awareness of Huu-ay-aht culture** and history

Theme 1: Plan for a Diversity of Housing Types, Tenures and Affordability Levels

Key Priorities:

- Build more housing to accommodate citizens
- Diverse Mix of Housing
- Affordable rents & housing



Theme 2: Desire for new community and recreation facilities

Key Priorities:

- New community facilities and infrastructure
- Healing / treatment / cultural centre
- Intergenerational spaces



Theme 3: Desire for multi-purpose culture and learning spaces

Key Priorities:

- Multi-purpose spaces to support traditional crafts and cultural practices
- Education or Training Centre (language / culture / employment)



Theme 4: Prioritize Cultural and Eco Tourism

Key Priorities:

- Tourism to celebrate Huu-ay-aht culture (i.e. traditional cuisine)
- Eco Tourism options could include guided tours, storm watching, and an eco hotel or spa



Theme 5: Sustainable and Indigenous-Owned Businesses

Key Priorities:

- Prioritize sustainable industries that align with Huu-ay-aht principles
- Desire for more local or community-serving retail spaces



Theme 6: Improved Connections on the Lands

Key Priorities:

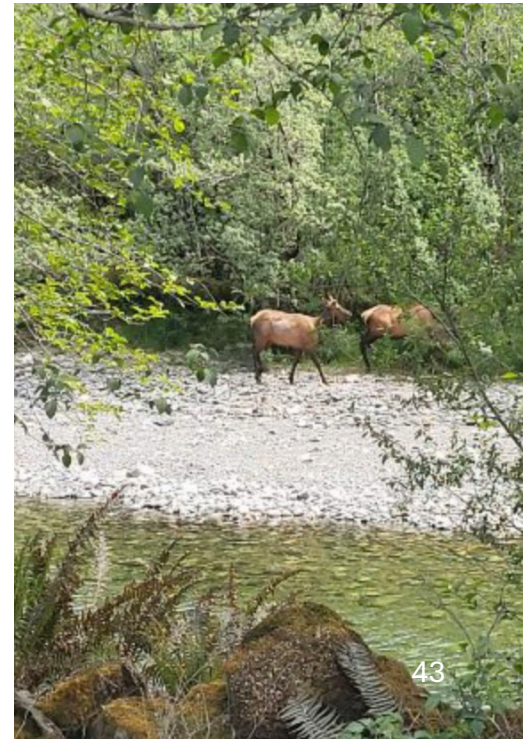
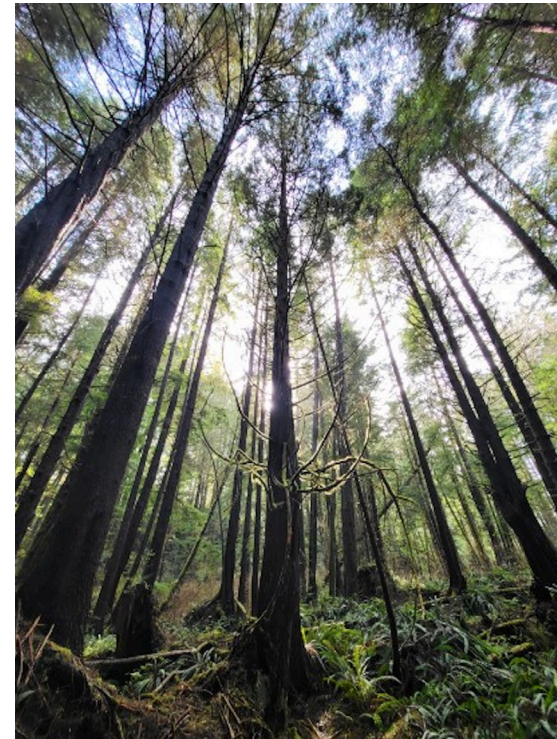
- Improved local and multi-modal connections for mobility and recreation
- Improvements to overall capacity, including potential for community shuttles and increased boat docking space



Theme 7: Preserving Natural Areas and Habitats

Key Priorities:

- Preserving natural areas and habitats for wildlife
- Potential for low-impact interventions within natural spaces



Theme 8: Celebrate Huu-ay-aht culture, history and realize the ambitions of the Strategic Plan

Key Priorities:

- Promoting awareness of the traditional territory and Huu-ay-aht culture
- Signage throughout the territory as a way to welcome visitors to the lands
- Build off the ambitions of the 2024 – 2029 Strategic Plan





05

Emerging Mission Statement & Principles



Framework Plan

Mission Statement

The Plan envisages a connected network of distinct, healthy, and sustainable coastal communities with a wide range of uses that support the needs of citizens and residents, celebrates Huu-ay-aht culture, and fosters a growing diversity of businesses and economies.

Overtime, the ḥahuuḷi will attract additional citizens to return, and draw visitors to experience the area's natural beauty.

Based on what we have heard...

Emerging Framework Plan Principles



01 Support a **complete, prosperous and healthy hāhuuī**



02 Foster a diverse **economy that unlocks the wealth of the hāhuuī**



03 Create welcoming **destinations and showcase landmarks**



04 **Connect** people and places



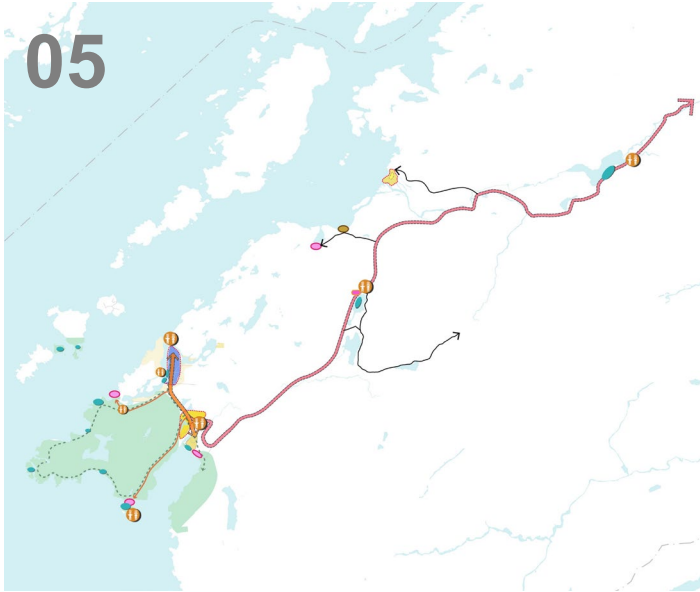
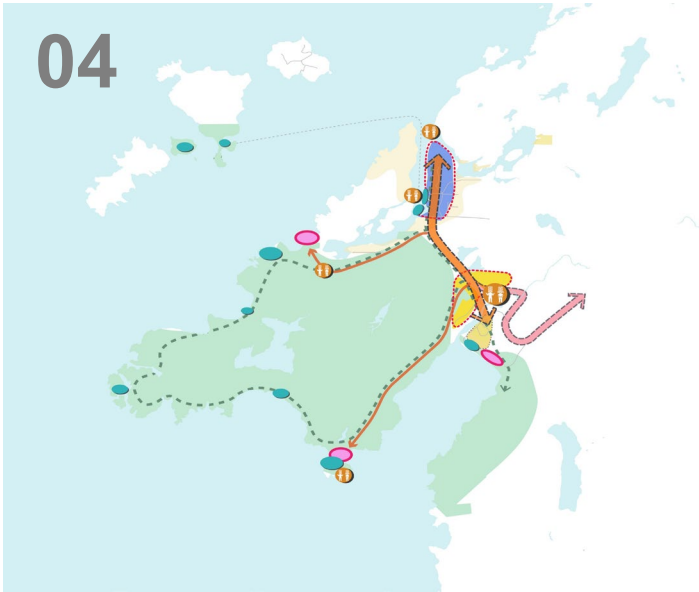
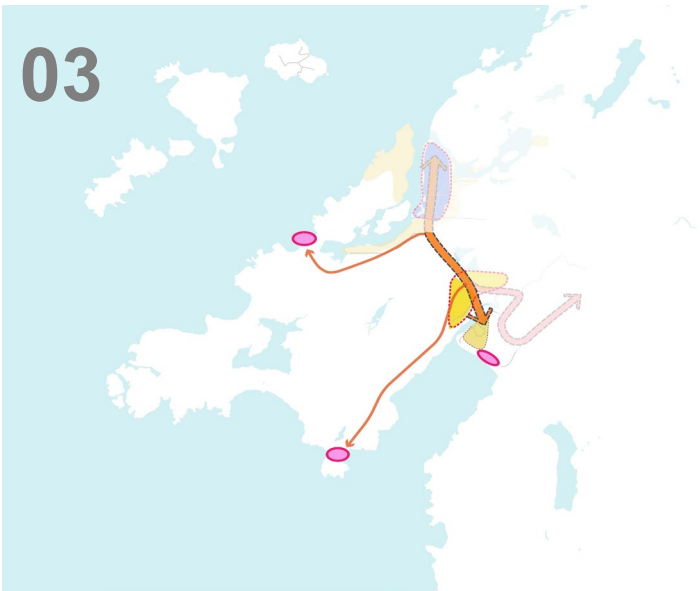
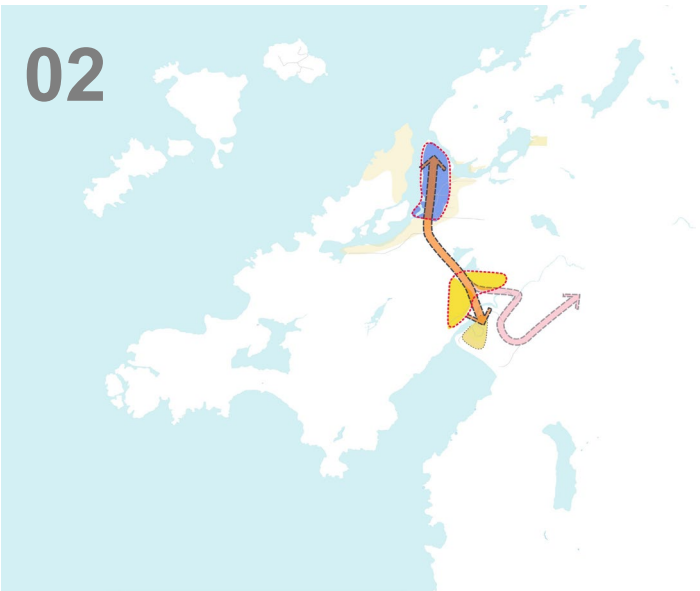
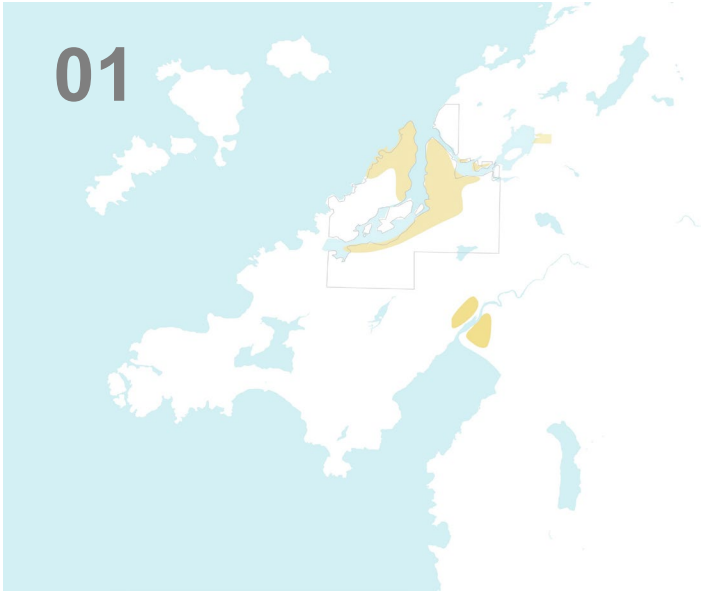
05 Best practices in **sustainability and resilience**

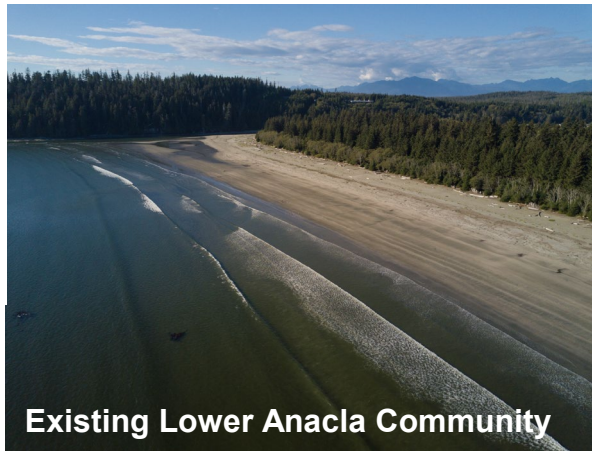


06

Draft
Structuring
Moves

Emerging Ideas

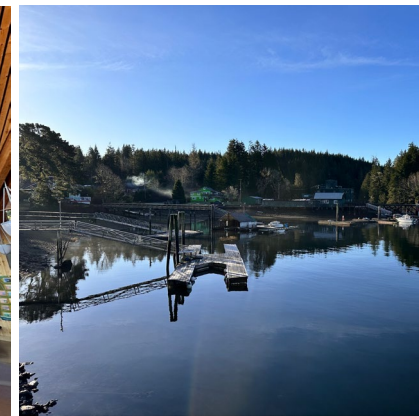


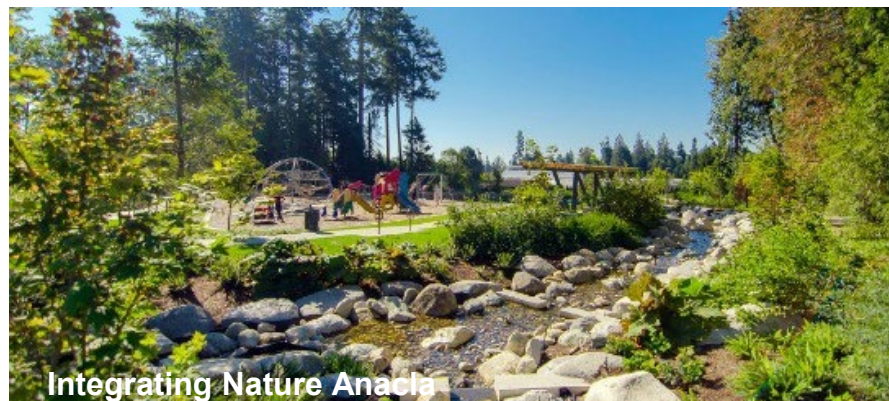
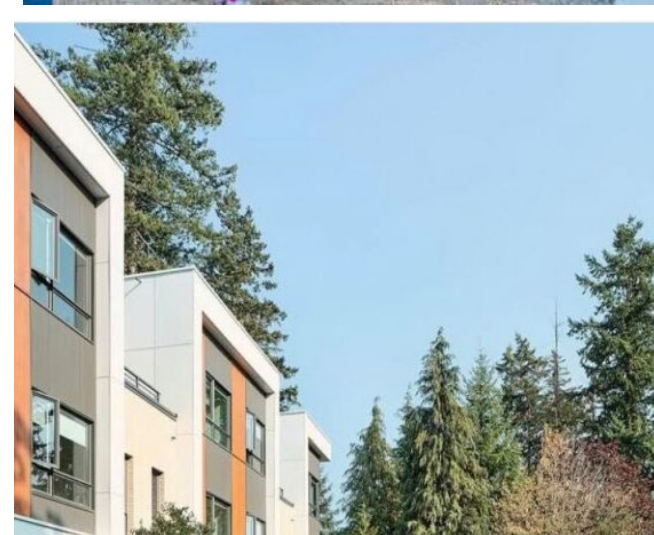
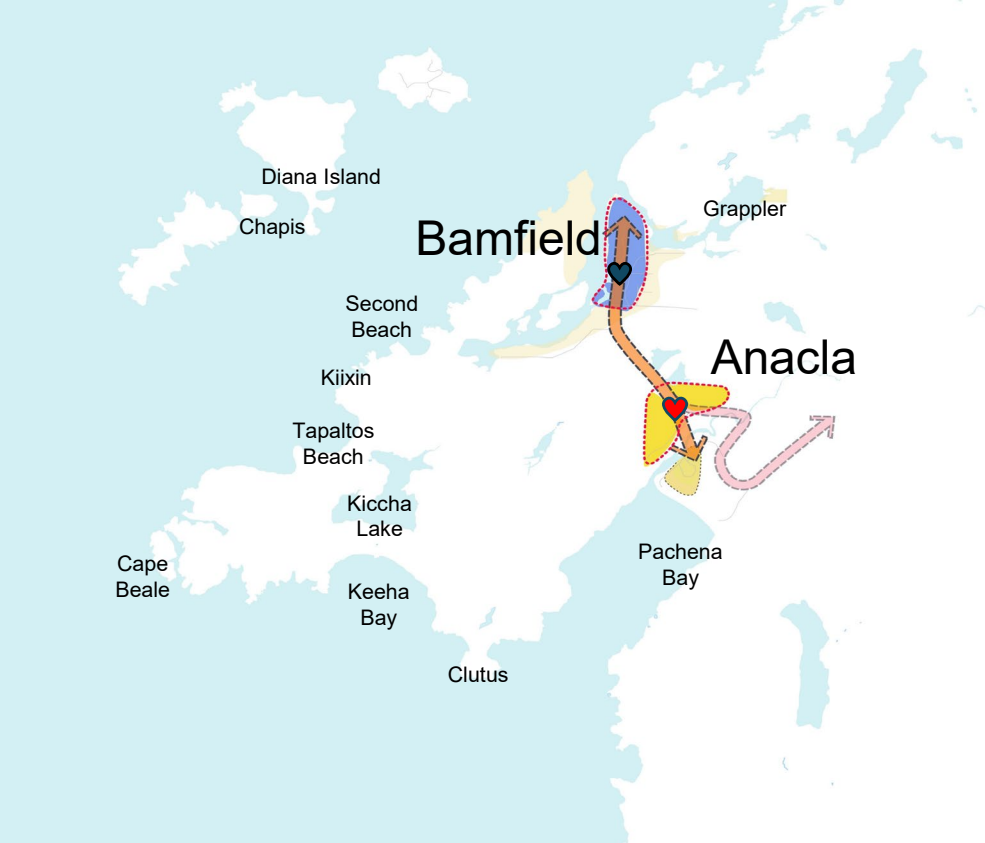


01

The Plan will enhance and build off of existing communities

Anacapa and Bamfield are two distinct yet related communities. The plan will enhance the character of each and build off investments made to date.





02

Expand Anacla and Bamfield as distinct yet complementary communities.

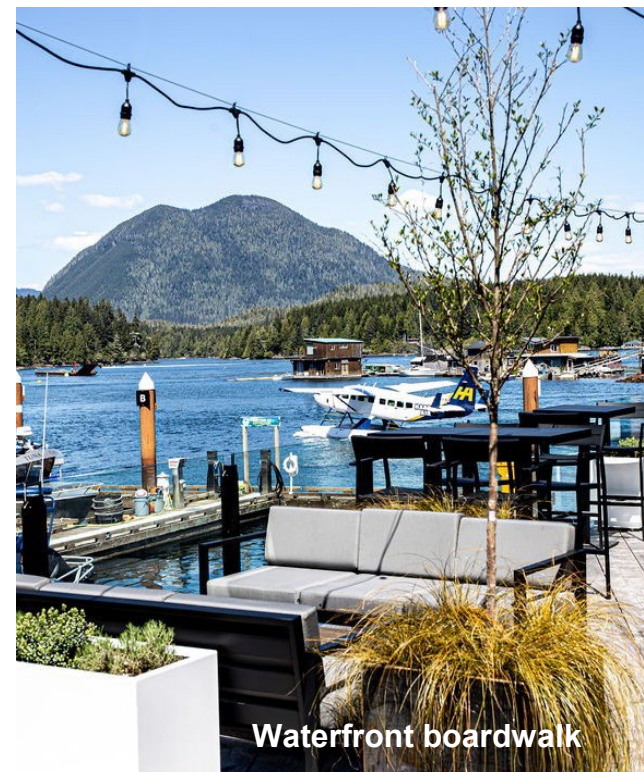
Reinforce Anacla as the centre of the HFN community, and Bamfield East as a commercial / tourism focal point.



02

Expand Anacla and Bamfield as distinct yet complementary communities.

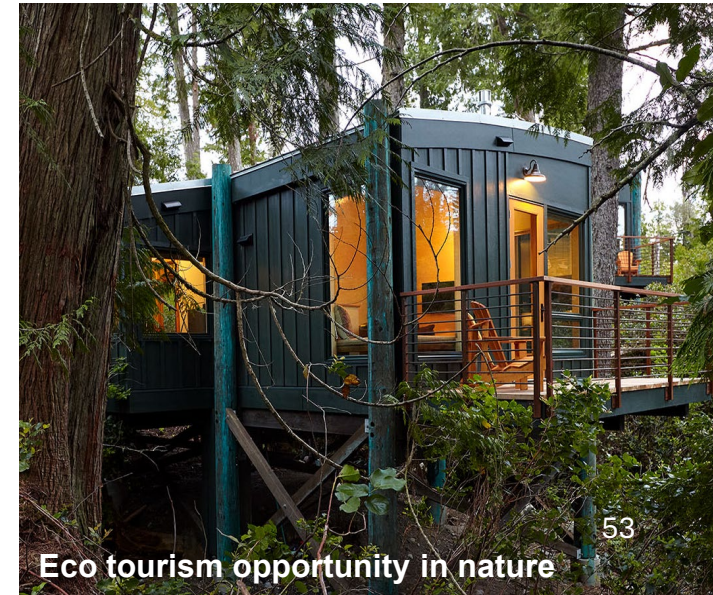
Reinforce Anacla as the centre of the HFN community, and Bamfield East as a commercial / tourism focal point.

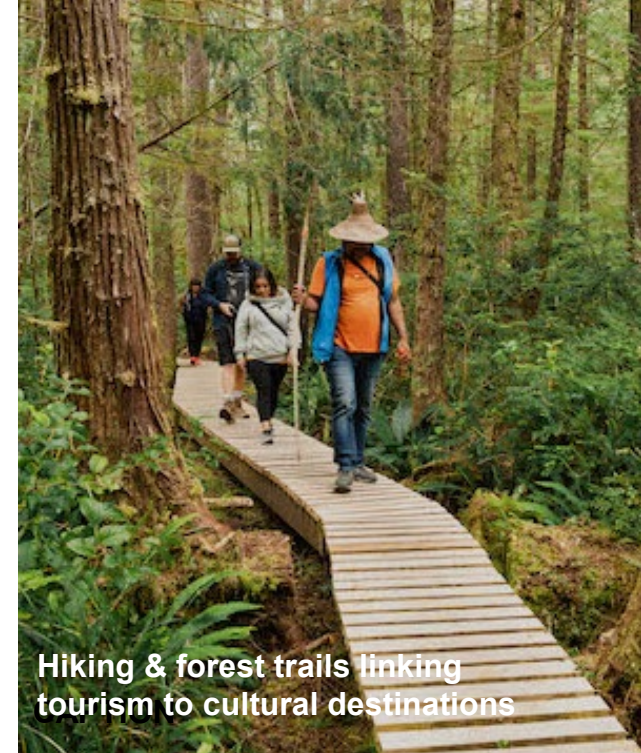




03

Three distinct and easily accessible tourism landmarks





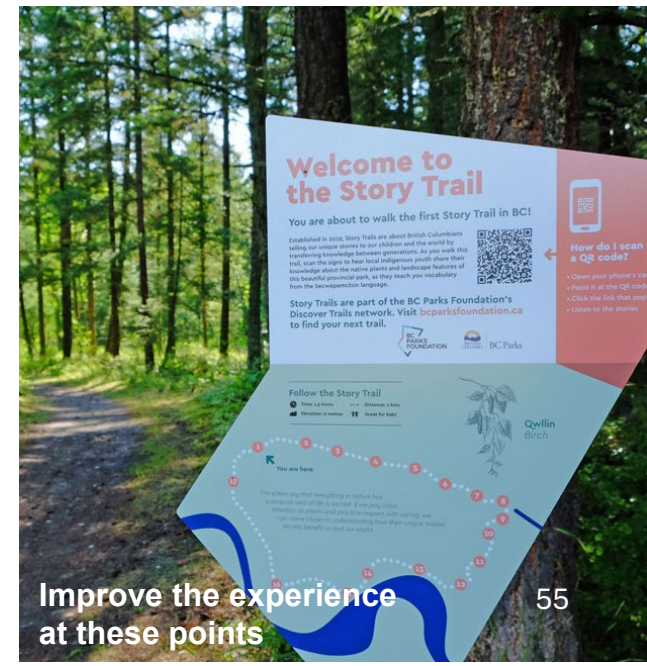
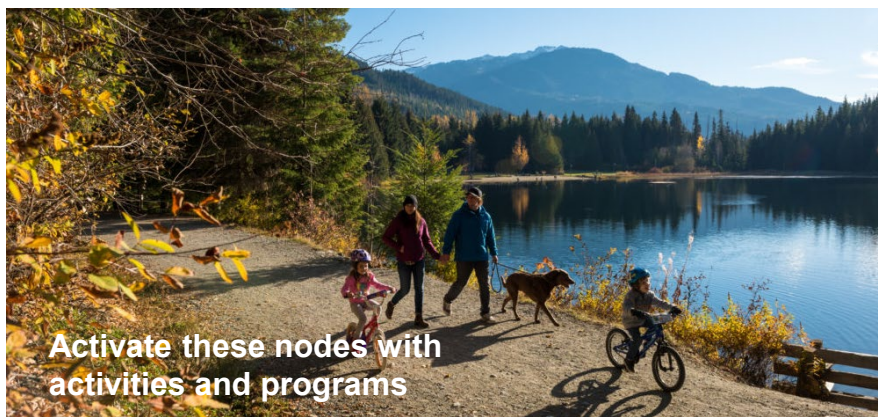
04

Create an interconnected coastline with an array of experiences, attractions, and cultural learning opportunities.



05

Introduce secondary points of interest along the Bamfield Main Road to showcase the lands.



Introduce welcome points along the road

Activate these nodes with activities and programs

Invest in natural /cultural destinations

Improve the experience at these points



07

Next Steps

How to stay engaged



Get more information from the Website

<https://huyuayaht.org/huu-ay-aht-framework-plan/>



Mark your calendars

We are having additional open houses in August. Next phase will commence in September.



Join the conversation on Facebook

<https://www.facebook.com/profile.php?id=61557378683261>



Questions?

Please Contact Piyush Pushkarna with any questions or comments:
piyush.p@huyuayaht.org





**HUU-AY-AHT FIRST NATIONS
FRAMEWORK PLAN**

Thank you!